

ANALYTICAL BALANCE WOODEN



Specification:-

We offer Analytical Balance used for measuring the weights. Analytical balance made of aluminum alloy which is a highly sensitive balance having 200gm and having a capacity and sensitive to 0.1mg. The balance is staged on synthetic back board and box is made of wood which is well polished and the rider scale is fitted in front of the beam which contains 100 Notches with zero at the center, vertical rating type on knives and planes.

Beam:

Short beam of hard brass

Rider on the scale

Arrester: vertical rating type on knives and planes

Pans: chromium plated, slightly concave inwards

Case: wooden polished case, with front slider and two side doors.

Base: sun mica black board

Capacity: 200gms

Sensitivity: .0.1 mg

Features:

Precise measurement

Durable

AUTOCLAVE VERTICAL DOUBLE WALLED SEMI-AUTOMATIC



Specification:-

Electrically heated vertical sterilizer is used for sterilization of surgical instruments dressing materials linen rubber, plastic material by means of saturated steam under pressure of 15 to 20 psi (adjusted) apart from health services it is also used in scientific research laboratories, educational institutions and universities.

Sturdy double walled construction with boiler inner chamber made of stainless steel of 18 SWG sheet. Outer shell is made of stainless steel.

The boiler and outer shell is provided with air insulation. Lid is made of stainless steel plate and is tightened all-around by wings nuts. Molded, joint less gaskets are made of Neoprene rubber. Sterilizer is hydraulically tested up to 40 p.s.i. Sterilizer is hydraulically tested up to 40 p.s.i.

Autoclaves are fitted with water level arrangements to indicate water position inside the boiler, pressure gauge, air/steam release cock, spring loaded safety valve which can be set at any selected point from 10 p.s.i., +3 p.s.i. and drain cock.

Available in following sizes:

	Dia x depth.	Ratings
a.	250 x 450 mm.	1.5 K.W.
b.	300 x 500 mm.	2.0 K.W.
c.	350 x 550 mm	3.0 K.W.
d.	400 x 600 mm	4.0 K.W.
e.	550 x 750 mm	6.0 K.W.

OPTIONAL ACCESSORIES :

- 1 **Automatic Pressure cut-off switch**
- 1 **Low water level cut-off device**
- 1 **Automatic german timer**

BACTERIOLOGICAL INCUBATOR

These are sturdy double walled units with outer chamber made of **MS sheet duly enamel painted** with inner made up of anodized aluminum or high SS sheet. The gap between inner and outer chamber is filled with high grade glass wool to avoid thermal losses. Heating elements are placed in ribs, at bottom and sides. Inner chamber is provided with ribs for adjusting perforated shelves to convenient height. The door is fitted with glass viewing window to facilitate inspection of samples without disturbing the test temperature.

Temperature is controlled by hydraulic type capillary thermostat from ambient to 70 degrees Celsius ± 5 degree. An 'L' shaped prismatic thermometer is fitted to the unit for reading the chamber temperature. Air ventilators are provided on the sides of the unit. The unit works on 220/230VAC supply.



Available sizes:-

- 300x300x300 (12"x12"x12")
- 350x350x350 (14"x14"x14")
- 400x400x400 (16"x16"x16")
- 450x450x450 (18"x18"x18")
- 600x450x450 (24"x18"x18")
- 600x600x600 (24"x24"x24")
- 900x600x450 (36"x24"x18")
- 900x600x600 (36"x24"x24")
- 900x900x900 (36"x36"x36")
- 900x900x900 (36"x36"x36")

Air circulating fan to cost extra

Digital temperature indicator cum controller (while ordering for an incubator with an digital controller, air circulating fan is considered compulsory and should be ordered along with it)

Timer (0-24 hours) to cost extra.

CENTRIFUGE MACHINE



Owing to the expertise of our professionals, we have been manufacturing and supplying a range of premium grade Centrifuge Machine. The machine is fixed with a base and a rotating element where the mixture is revolved at a high speed. One of the important features of our Laboratory Centrifuge Machine is that it has high tensile, which helps it in revolving at a strong force. Using Centrifugal force, the machine is capable of rotating the material of different densities easily. It is capable of separating solid and liquid parts of the and helps in purifying the vaccines.

Technical specification:

This centrifuge having better speeds and capacities fitted with resiliently mounted for vibration free performance and 5 step regulator

Body made of steel duly powder coated paint finish.

Round lid with handle available in 8 tubes

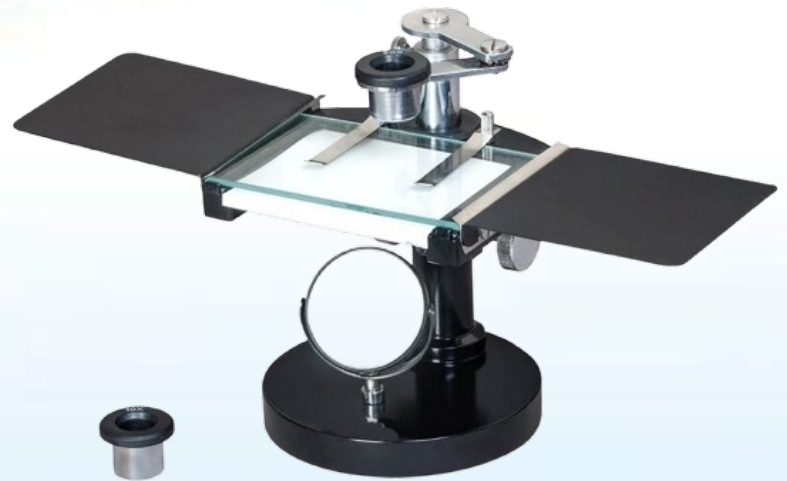
Available in

4 Tubes

6 Tubes

8 Tubes

DISSECTING MICROSCOPE



SPECIFICATION:

With the comprehensive industry knowledge of allied domain, we are engaged in presenting a superior quality range of dissecting microscope. It has a heavy round base with precisely designed body. Sensitive focusing is done by rack and pinion arrangement. Revolving arm provided for moving magnifying lens over full stage area. At our manufacturing unit, our engineers have designed the device adhering to international industry standards and using heavy cast material. Besides, clients can get the device from us at industry leading prices.

Features:

- Accurate results
- Easy to use and fix
- Specifications:
- Size available: 85 x 75 mm with glass plate
- illumination: A Plano-concave mirror fitted in fork for light reflection
- Optics: 10 X & 20 X eyepieces

OVERHEAD PROJECTOR



Specification:-

- Working Stage of 250mm x 250mm
- Folding arm for head for easy storage .Anti glare Fresnel lens
- External quick lamp changer
- Twin halogen lamps,24VV,250VV
- Lens 1-element $f=275$
- Light output of 2500+Lumens
- Retractable Transparency locating pins. Titling angle 0-60
- Head rotation 360
- Condenser Lens
- Safety cut switch
- Forced air cooling system(Twin fan)
- Power cord of 3 mtrs. standard detachable
- Tridoal Transformer
- Packing size 490x460x320mm

Standand Accessories :

- Two nos. glass fuse
- One No. cleaning cloth
- Dust cover packed with thermocole in sturdy cardboard box.

Manufacturers & Exporters

THE INDO SATI INSTRUMENTS & CHEMICALS

MEDICAL LAB D,B&M PHARMACY COLLEGES/INSTITUTIONS

D & B D-U-N-S NUMBER -91-652-0568 Govt Reg. No.-NSIC/GP/NTP/2022/98624

#3674, TIMBER MARKET, Ambala Cantt - 133 001 (INDIA) Tel No.: 0091-171-4000131 / 4001131

E & OE

SOXHLET EXTRACTION UNIT



Soxhlet Extration Unit for 100 to 500 ml flasks with one energy regulator for controlling all baths individual ON/OFF switches with glass parts. Two adjustable rods with clamps.

- Unit of 3 test with ON/OFF switches. (Hot Plate Type)
- Unit of 3 test with ON/OFF switches. (Mantle Type)
- Unit of 6 test with ON/OFF switches. (Hot Plate Type)
- Unit of 6 test with ON/OFF switches. (Mantle Type)

INSTRUMENTS STERILIZER PORTABLE ELECTRIC



INSTRUMENTS STERILIZER PORTABLE ELECTRIC

Features with high-grade components and excellent performance, the sterilizer are ideal for decontamination of hospital instruments the latest technology is incorporated to ensure reliability & durability.

Benefits :

- Electrically Operated
- Thermostatic Operated
- Thermostatic Device to Control Temperature of Water
- Complete with Auto Tray Lift Arrangement
- Made of stainless steel

Size:

20"x8"x6"

17"x8"x6"

12"x6"x5"

STUDENT MICROSCOPE



DESCRIPTION:-

Body:-Well designed heavy & sturdy die-casted monocular body inclinable to 90° suitable to meet the needs of college and school students.

To be with mechanical length 160mm.

Focusing by separate coarse fine focusing knobs with triple revolving nose piece, horse shoe base.

Square stage 120x120mm with clips for holding the slide.

Double lens bright field ABBE Condenser(N.A. 1.25) is fixed with the stage with iris diaphragm and swing out filter holder.

Illumination by plano concave mirror in fork mount.

Optical Combination:

Anti Fungal Objectives:4/5x, 10x, 45x(SL)

Eye Piece:10x, 15x(Huygenian)

Packing: In thermocouple case with dust cover.

WATER STILL WALL MOUNTED S.S



The unit is recommended for making progeny free distilled water of a very high degree of purity. Made out of stainless steel, special kettle element is fitted with ejection device/auto cut for safety of the element in case water supply is stopped. The cock fitted to the unit is of brass C.P. Distillation with or without FLANGE SYSTEM can be supplied. Unit with flange system can be opened for cleaning of condenser from time to time so as to ensure its long life. A wall mounting clamp is provided with the unit but rubber tubing. Supplied with cord and plug to work on 220/230volts A.C. supply Available in capacities of approx. 4&6liters

Brand	Indosati
Material	Stainless Steel
Capacity	4,6 Liters
No of element	1 or 2

WEIGHING MACHINE ADULT



Product Details:

- Type: Platform
- Display Type: Digital
- Color: Available in various colors

Being one of the trusted firms in the industry, we are highly engaged in providing a unique range of Fetus Weighing Scale.

ANAEROBIC CULTURE JAR POLY



Specification:-

- Transparent Anaerobic Culture Jar of 3.5.lit. capacity which is made of polycarbonate.
- The lid of the jar is made of Aluminum pressure die Casting fitted with Pressure Valve,
- Vacuum Valve, Safety Valve & compound pressure cum vacuum gauge, three finger4
- Aluminum clamp and sealing “O” ring. This is recommended only where inside air of jar is
- Removed thru vacuum pump and CO2 is filled in the jar thru CO gas cylinder to generate
- Anaerobic condition in the jar.
- Also supplied with plain aluminum pressure die casted lid which can be fitted when
- Readymade gas packs are used to generate the anaerobic conditions inside the jar.
- When readymade gas packs are used, there is no need of lid fitted with dial gauge etc.for extra life of equipment.

AUTOCLAVE VERTICAL DOUBLE WALLED SEMI-AUTOMATIC



Specification:-

Electrically heated vertical sterilizer is used for sterilization of surgical instruments dressing materials linen rubber, plastic material by means of saturated steam under pressure of 15 to 20 psi (adjusted) apart from health services it is also used in scientific research laboratories, educational institutions and universities.

Sturdy double walled construction with boiler inner chamber made of stainless steel of 18 SWG sheet. Outer shell is made of stainless steel.

The boiler and outer shell is provided with air insulation. Lid is made of stainless steel plate and is tightened all-around by wings nuts. Molded, joint less gaskets are made of Neoprene rubber. Sterilizer is hydraulically tested up to 40 p.s.i. Sterilizer is hydraulically tested up to 40 p.s.i.

Autoclaves are fitted with water level arrangements to indicate water position inside the boiler, pressure gauge, air/steam release cock, spring loaded safety valve which can be set at any selected point from 10 p.s.i., +3 p.s.i. and drain cock.

Available in following sizes:

	Dia x depth.	Ratings
a.	250 x 450 mm.	1.5 K.W.
b.	300 x 500 mm.	2.0 K.W.
c.	350 x 550 mm	3.0 K.W.
d.	400 x 600 mm	4.0 K.W.
e.	550 x 750 mm	6.0 K.W.

OPTIONAL ACCESSORIES :

- 1 **Automatic Pressure cut-off switch**
- 1 **Low water level cut-off device**
- 1 **Automatic german timer**

B.O.D INCUBATOR



This the most versatile low temperature indicator for biochemical oxygen demand determination. Caster wheel mounted cabinet is double walled with inner chamber of anodized aluminum of stainless steel and outer casing of **M.S. sheet duly painted**. The gap of 75 m.m. between the outer and the inner wall is filled with special grade glass wool to prevent thermal losses. Triple walled back of the unit is fitted with two air circulation fans for maintaining temperature uniformly through the chamber. Heating elements of nicrome wire are placed in the air path and are duly insulated from the body. The inner chamber is ribbed for placement of shelves at desired height. Full view inner glass door permits inspection of specimens, without disturbing the same, lock and key arrangement is provided in the double walled outer door. Unit is fitted with door operated illumination lamp inside the chamber.

The temperature range from 5 degree c to 50 degree c is controlled by two **EGO/JUMO** German double action hydraulic capillary thermostat. Refrigeration unit is formed by Hermetically sealed ISI marked compressor and the cooling coils are distributed all round the chamber and lie in the air circulation path. An l-shaped prismatic Thermometer is provided at the top on the front panel along with separate indicator lamps for mains, heating and incoming voltage. Supplied complete with 3 shelves, cord and plug to work on 220/230v A.C. Supply.

B.O.D. Incubator with vertically illumination with 3 numbers of fluorescent tubes of 60 cm. length placed vertically along the back wall, separate on/off switch for tubes.

B.O.D. Incubator incorporated with timer 0-24 hour for regulation cyclic at an extra cost.

B.O.D. Incubator for incubation in CO₂ of air mixture could be provided with an inlet nozzle on the side of control panel providing a means for admitting or CO₂ of air/ CO₂ mixtures. Similar nozzle is provided for monitoring CO₂ concentration at an extra cost.

Digital temperature indicator cum controller with PT-100 sensor at an extra cost instead of mercury thermometer.

DIGITAL LABORATORY INCUBATOR

These are sturdy double walled units with outer chamber made of **MS sheet duly enamel painted** with inner made up of anodized aluminum or high SS sheet. The gap between inner and outer chamber is filled with high grade glass wool to avoid thermal losses. Heating elements are placed in ribs, at bottom and sides. Inner chamber is provided with ribs for adjusting perforated shelves to convenient height. The door is fitted with glass viewing window to facilitate inspection of samples without disturbing the test temperature.

Temperature is controlled by hydraulic type capillary thermostat from ambient to 70 degrees Celsius ± 5 degree. An 'L' shaped prismatic thermometer is fitted to the unit for reading the chamber temperature. Air ventilators are provided on the sides of the unit. The unit works on 220/230VAC supply.



Available sizes:-

- 300x300x300 (12"x12"x12")
- 350x350x350 (14"x14"x14")
- 400x400x400 (16"x16"x16")
- 450x450x450 (18"x18"x18")
- 600x450x450 (24"x18"x18")
- 600x600x600 (24"x24"x24")
- 900x600x450 (36"x24"x18")
- 900x600x600 (36"x24"x24")
- 900x900x900 (36"x36"x36")
- 900x900x900 (36"x36"x36")

Air circulating fan to cost extra

Digital temperature indicator cum controller (while ordering for an incubator with an digital controller, air circulating fan is considered compulsory and should be ordered along with it)

Timer (0-24 hours) to cost extra.

CENTRIFUGE MACHINE



Owing to the expertise of our professionals, we have been manufacturing and supplying a range of premium grade Centrifuge Machine. The machine is fixed with a base and a rotating element where the mixture is revolved at a high speed. One of the important features of our Laboratory Centrifuge Machine is that it has high tensile, which helps it in revolving at a strong force. Using Centrifugal force, the machine is capable of rotating the material of different densities easily. It is capable of separating solid and liquid parts of the and helps in purifying the vaccines.

Technical specification:

This centrifuge having better speeds and capacities fitted with resiliently mounted for vibration free performance and 5 step regulator

Body made of steel duly powder coated paint finish.

Round lid with handle available in 8 tubes

Available in

4 Tubes

6 Tubes

8 Tubes

CHEMICAL BALANCE



We are manufacturing a wide range of Chemical Balance for our customers.

Technical Specifications:

Beam:

Short beam of hard brass

Upper edge divided into 50 scale divisions to each side

Each scale division representing 1/5 mg

Rider on the scale

Stand: all parts of brass

Arrester: vertical raising type

Pans: chromium plated, slightly concave inwards

Case: wooden polished case, with front slider and two side doors.

Base: sun mica black board

Capacity: 200gms

Sensitivity: 1/5 mg

Features:

Precise measurement

Durable

DOUBLE DISTILLATION UNIT

VERTICAL ALL GLASS

- The assembly consists of a corning glass flask with embedded heating elements fused in spiral type glass coil internally at bottom. A double wall.
- Coiled condenser has standard ground glass joints. Complete with glass fitting, metallic stand rings, clamps and electrical fittings. The unit supplied is as per NPL patent design. To work on 220/230 volts A.C.supply.
- Available in single ,double or triple stage as required.



Available in the following sizes ← 3 Liters, 5 Liters, 10 Liters

OPTIONAL ACCESSORIES

- Automatic water cut off device in case water supply is stopped. This is a solid state transistorized device which automatically keeps watch on regular supply of water in the flask and keeps the heaters On only when the water supply is normal. It automatically cuts OFF the supply of heaters from the mains when the water supply get disturbed and thus prevents the burning of heating element/melting of glass coil. Heaters would automatically be switched ON when the water comes to normal.
- Special grade rubber tumbling for connections(coil of 10 meters).

HAEMATOCRIT CENTRIFUGE DIGITAL 16000 R.P.M



Haematocrit Centrifuge Digital 13000 R.P.M microprocessor based, Digital timer R.P.M meter and programmable speed regulator, Supply complete with rotor+reading device+1 Pkt. capillaries,1 Pc Wax sealing tray and instruction manual.

Type of Product	Haematocrit Centrifuge
Maximum Speed	13000 rpm
Weight:	11 Kg
Dimension (mm)	290 x 270 x 240 mm

DIGITAL HOT AIR OVEN



These are sturdy double walled units with outer chamber made of MS sheet duly enamel painted with inner made up of anodized aluminum or high SS sheet. The gap between inner and outer chamber is filled with high grade glass wool to avoid thermal losses. Heating elements are placed in ribs, at bottom and sides. Inner chamber is provided with ribs for adjusting perforated shelves to convenient height. The

Temperature is controlled by hydraulic type capillary thermostat from ambient to 250 degrees Celsius ± 5 degree. An 'L' shaped prismatic thermometer is fitted to the unit for reading the chamber Temperature. Air ventilators are provided on the sides of the unit. The unit works on 220/230VAC supply.

INSIDE CHAMBER SIZE (WxHxD) in mm.

300x300x300	2
355x355x355	2
455x455x455	2
605x605x605	2
605x455x910	3
605x605x910	3

OPTIONAL ACCESSORIES

- {Air circulating fan to cost extra.
- {Digital temperature indicator cum controller (while ordering for an incubator with an digital controller, air circulating fan is considered compulsory and should be ordered along with it)
- {Timer (0-24 hours) to cost extra.

LAMINAR AIR FLOW HORIZONTAL WOODEN



Switches :	Switches for blower, LED light & UV light.
Pre-filter :	90.00% down to 5 micron
HEPA Filter :	ISO 14644 Class 5 (Class 100) 99.97%-99.99% down Down to 0.3 micron. Mesh guard for protection of HEPA Filter.
Airflow :	Frontward Horizontally.
Noise Level :	60 decibel \pm 5%.
Velocity :	0.35-0.50m/sec
Work Table :	Made up of Stainless Steel 304gr. Cock for gas on work table.
Side Panels:	6mm \pm 0.5mm thick acrylic sheet.
Front door:	Made of acrylic. (Foldable)
UV Lamp :	15/30W, make Philips Holland.
Illuminationr:	LED White Light
Pressure:	Inclined Manometer 0-50mm range.
Power Supply :	230V \pm 10V/50Hz single phase A.C.
Cabinet :	19mm thick Dura-board Covered with mica from outside and epoxy painted from inside.
Heavy Duty Blower:	Dynamically balanced with 0.25 HP Electric Motor Mounted on anti vibration pad1440rpm motor.

Available Size:

- Working area size 60x60x60 cm
- Working area size 90x60x60 cm.
- Working area size 120x60x60 cm.
- Working area size 180x60x60 cm.

STUDENT MICROSCOPE



DESCRIPTION:-

Body:-Well designed heavy & sturdy die-casted monocular body inclinable to 90° suitable to meet the needs of college and school students.

To be with mechanical length 160mm.

Focusing by separate coarse fine focusing knobs with triple revolving nose piece, horse shoe base.

Square stage 120x120mm with clips for holding the slide.

Double lens bright field ABBE Condenser(N.A. 1.25) is fixed with the stage with iris diaphragm and swing out filter holder.

Illumination by plano concave mirror in fork mount.

Optical Combination:

Anti Fungal Objectives:4/5x, 10x, 45x(SL)

Eye Piece:10x, 15x(Huygenian)

Packing: In thermocouple case with dust cover.

MEDICAL MICROSCOPE



DESCRIPTION:-

Body:- well designed heavy & sturdy die-casted monocular body inclinable to 90° specially recommended for Pathological labs, Doctors and Medical colleges.

Pathological Microscope having coarse focusing rack & pinion and sensitive fine graduated slow motion reading to .002mm.

Sub Stage ABBE Condenser(N.A. 1.25) is moveable on rack & pinion motion and has an iris diaphragm and swing out filter holder. Fitted with quadruple revolving nose piece and fixed stage size 120x120mm with precision mechanical stage for xandy movement of slide with slide safety stopper.

Microscope is Inclinable thorough 90° with mechanical tube length 160mm.

Illumination by plano concave mirror 50mm dia in metallic fork replaceable by sub stage pin type lamp 220V/15W(optional).

Square stage 120x120mm with detachable mechanical stage for x and y movement. Double lens ABBE Condenser(N.A. 1.25) with iris diaphragm, having swing out filter holder movable by rack & pinion.

Optical Combination:

Anti Fungal Objectives: 10x, 40/45x (SL),
100x(oil immersion)

Eye piece: 10x(wide field) 5x/15x(Huygenian)

Packing: We serve the Microscope in a packing of thermocole, covered in wooden case to avoid single chance of breakage

RESEARCH BINOCULAR MICROSCOPE



DESCRIPTION:-

Body: Well designed die-casted body staple grey & black contrast with hard instrumental chromium finish.

Observation Head: Special quality Binocular observation head inclined at 45° & rotatable through 360°. All prism & optical surface are anti reflection coated. Standard interpupillary distance & diopter adjustment provided.

Nose Piece: Dust proof quadruple nose piece with click for perfect optical alignment.

Stage: Fixed stage 140mm x 120mm with built in co-axial mechanical stage for easy and smooth bearing.

Condenser: Double lens bright field Abbe's condenser N.A. 1.25 with iris diaphragm movable by rack & pinion.

Illumination: By halogen lamp 6v 20watts operated through built in solid state transformer with electronic regulator.

Safety Stopper: Prevent damage to slides and objectives.

Optics: High class anti reflection coated self centres & parafocal achromatic objectives & superior quality eye pieces.

Packing: In dust proof thermocol box housed in 12,, thick beautiful storing cabinet with sumica door.

OPTICAL COMBINATION

Eyepieces	Objectives	Magnification
Paired 10x W.F.	5x 10x 45x S.L	25x – 1500x
5x or 15x Huy.	100x Oil Imm.S.L	

OCCULAR MICROMETER



We are enlisted amongst the reckoned names in the industry, offering wide array of Occular Micrometer that are quality approved and are offered with flawless finishing. Our ranges of Occular Micrometer are superior in quality and accurate in dimension. They are known for their long life and excellent performance. They provide the excellent results to the user with any trouble during their use. Our products are known for their reliability. We are committed for the time frame execution for our assignments along with unmatched quality.

Features:

High quality

Dimensionally accurate

Abrasion resistant

OVERHEAD PROJECTOR



Specification:-

- Working Stage of 250mm x 250mm
- Folding arm for head for easy storage .Anti glare Fresnel lens
- External quick lamp changer
- Twin halogen lamps,24VV,250VV
- Lens 1-element $f=275$
- Light output of 2500+Lumens
- Retractable Transparency locating pins. Titling angle 0-60
- Head rotation 360
- Condenser Lens
- Safety cut switch
- Forced air cooling system(Twin fan)
- Power cord of 3 mtrs. standard detachable
- Tridoal Transformer
- Packing size 490x460x320mm

Standand Accessories :

- Two nos. glass fuse
- One No. cleaning cloth
- Dust cover packed with thermocole in sturdy cardboard box.

Manufacturers & Exporters

THE INDO SATI INSTRUMENTS & CHEMICALS

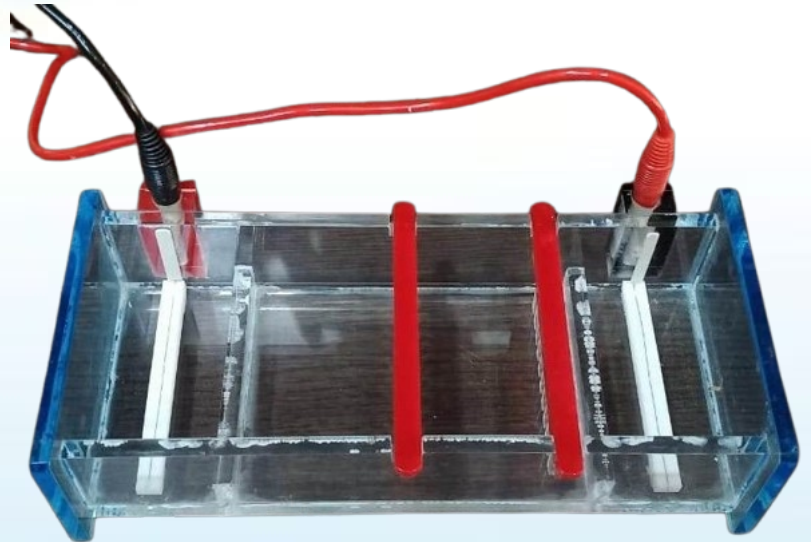
MEDICAL LAB D,B&M PHARMACY COLLEGES/INSTITUTIONS

D & B D-U-N-S NUMBER -91-652-0568 Govt Reg. No.-NSIC/GP/NTP/2022/98624

#3674, TIMBER MARKET, Ambala Cantt - 133 001 (INDIA) Tel No.: 0091-171-4000131 / 4001131

E & OE

HORIZONTAL GEL ELECTROPHORESIS



SPECIFICATION:-

Gel Electrophoresis system vertical mini with glass plates, combs. Leak proof, Moulded in single piece made of polycarbonate.99.9% pure platinum wire is used in electrode.

Usage	Laboratory
Material	Acrylic
Connecting Cord	Red & Black
Including	Acrylic Chamber-1,Spatula-1,Lid-1,Combs-2,Cord-2

Features:

- Superior performance
- Long Service life
- Optimal quality

SEROLOGICAL/CONSTANT TEMPERATURE WATER BATH



This unit are double walled with inner chamber made up of stainless steel and outside of mild steel duly enamel painted. The gap between the walls is fitted with special grade glass wool in order to avoid thermal losses. The inner chamber fitted with immersion type heating element is covered with perforated removable diffuser tray. Top cover is provided with the unit as a standard accessory.

Temperature from ambient to 90 degree c is controlled by hydraulic capillary type thermostat or digital controller with an accuracy of ± 0.5 degree c. supplied complete with 220/230 volts AC supply.

INSIDE CHAMBER SIZE (WxHxD) in mm.	LOAD
300x250x175	1.0KW
330x300x175	1.5KW
455x300x175	2.0KW
605x300x175	3.0KW

OPTIONAL ACCESSORISE

- Stirrer with 1/20 H.P. high speed motor with S.S rod and blade.
- Digital Temperature Indicator-Cum-Controller.

INSTRUMENTS STERILIZER PORTABLE ELECTRIC



INSTRUMENTS STERILIZER PORTABLE ELECTRIC

Features with high-grade components and excellent performance, the sterilizer are ideal for decontamination of hospital instruments the latest technology is incorporated to ensure reliability & durability.

Benefits :

- Electrically Operated
- Thermostatic Operated
- Thermostatic Device to Control Temperature of Water
- Complete with Auto Tray Lift Arrangement
- Made of stainless steel

Size:

20"x8"x6"

17"x8"x6"

12"x6"x5"

MERCURY THERMOMETER



Specification

1. Chemical thermometer (mercury) 360 degree
2. Pack of 10 made from yellow capillary, mercury filled by heat process, calibrate under controlled conditions, approx. 12 inches long and 7-8 mm thick.
3. This thermometer for temperature measurement in a rang of -10 to 360 degree.
4. A good choice for classroom and laboratory use.
5. Each thermometer packed in plastic case and pack of ten.

DIGITAL VDRL SHAKER



Specification:-

- ❖ Compact shaker for mixing sample
- ❖ Wide Speed Range
- ❖ Timer option for accurate mixing time
- ❖ RPM controller knob and digital Timer available for exact results
- ❖ Stable at high speeds
- ❖ Separate platform attachment available for mixing more than one samples

Technical Data :

Brand:	Indosati
Material:	Mild Steel
Type of movement :	Rotational
Speed Range:	0-180 rpm
Operation Mode:	Continuous Operation
Timer range:	1-99 minutes
Dimensions :	33x33x18cm.
Weight:	11 kg
Permissible Ambient Temperature:	5-40 degrees
Permissible relative moisture:	80%
Motor type:	PMDC motor
Speed Display :	None
Time Display:	Yes
Power Supply :	220V, 50hz
Time Display:	Yes
Power Supply :	220V, 50hz

Manufacturers & Exporters

THE INDO SATI INSTRUMENTS & CHEMICALS

MEDICAL LAB D,B&M PHARMACY COLLEGES/INSTITUTIONS

D & B D-U-N-S NUMBER -91-652-0568 Govt Reg. No.-NSIC/GP/NTP/2022/98624

#3674, TIMBER MARKET, Ambala Cantt - 133 001 (INDIA) Tel No.: 0091-171-4000131 / 4001131

E & OE

WATER BATH THERMOSTATIC



It is double walled with inner chamber made of stainless steel and outer wall of M.S sheet duly enamel painted. The gap between outer and inner walls is fitted with special grade glass wool insulation. The concentrate rings can be removed to accommodate containers of various sizes.

Temperature from ambient to $90 \text{ }^{\circ}\text{C} \pm 0.5 \text{ }^{\circ}\text{C}$ is controlled by "EGO"/"JUMO"GRMAN thermostat.

AVAILABLE SIZES:

300x250x100 m.m . (6 holes of 75 m.m dia)

300x405x100 m.m. (12 holes of 75 m.m dia)

Optional Accessories

Digital Temperature Indicator-Cum-Controller.

WATER STILL WALL MOUNTED S.S



The unit is recommended for making progeny free distilled water of a very high degree of purity. Made out of stainless steel, special kettle element is fitted with ejection device/auto cut for safety of the element in case water supply is stopped. The cock fitted to the unit is of brass C.P. Distillation with or without FLANGE SYSTEM can be supplied. Unit with flange system can be opened for cleaning of condenser from time to time so as to ensure its long life. A wall mounting clamp is provided with the unit but rubber tubing. Supplied with cord and plug to work on 220/230volts A.C. supply Available in capacities of approx. 4&6liters

Brand	Indosati
Material	Stainless Steel
Capacity	4,6 Liters
No of element	1 or 2

ANAEROBIC CULTURE JAR POLY



Specification:-

- Transparent Anaerobic Culture Jar of 3.5.lit. capacity which is made of polycarbonate.
- The lid of the jar is made of Aluminum pressure die Casting fitted with Pressure Valve,
- Vacuum Valve, Safety Valve & compound pressure cum vacuum gauge, three finger4
- Aluminum clamp and sealing “O” ring. This is recommended only where inside air of jar is
- Removed thru vacuum pump and CO₂ is filled in the jar thru CO gas cylinder to generate
- Anaerobic condition in the jar.
- Also supplied with plain aluminum pressure die casted lid which can be fitted when
- Readymade gas packs are used to generate the anaerobic conditions inside the jar.
- When readymade gas packs are used, there is no need of lid fitted with dial gauge etc.for extra life of equipment.

AUTOCLAVE VERTICAL DOUBLE WALLED SEMI-AUTOMATIC



Specification:-

Electrically heated vertical sterilizer is used for sterilization of surgical instruments dressing materials linen rubber, plastic material by means of saturated steam under pressure of 15 to 20 psi (adjusted) apart from health services it is also used in scientific research laboratories, educational institutions and universities.

Sturdy double walled construction with boiler inner chamber made of stainless steel of 18 SWG sheet. Outer shell is made of stainless steel.

The boiler and outer shell is provided with air insulation. Lid is made of stainless steel plate and is tightened all-around by wings nuts. Molded, joint less gaskets are made of Neoprene rubber. Sterilizer is hydraulically tested up to 40 p.s.i. Sterilizer is hydraulically tested up to 40 p.s.i.

Autoclaves are fitted with water level arrangements to indicate water position inside the boiler, pressure gauge, air/steam release cock, spring loaded safety valve which can be set at any selected point from 10 p.s.i., +3 p.s.i. and drain cock.

Available in following sizes:

	Dia x depth.	Ratings
a.	250 x 450 mm.	1.5 K.W.
b.	300 x 500 mm.	2.0 K.W.
c.	350 x 550 mm	3.0 K.W.
d.	400 x 600 mm	4.0 K.W.
e.	550 x 750 mm	6.0 K.W.

OPTIONAL ACCESSORIES :

- 1 **Automatic Pressure cut-off switch**
- 1 **Low water level cut-off device**
- 1 **Automatic german timer**

B.O.D INCUBATOR



This the most versatile low temperature indicator for biochemical oxygen demand determination. Caster wheel mounted cabinet is double walled with inner chamber of anodized aluminum of stainless steel and outer casing of **M.S. sheet duly painted**. The gap of 75 m.m. between the outer and the inner wall is filled with special grade glass wool to prevent thermal losses. Triple walled back of the unit is fitted with two air circulation fans for maintaining temperature uniform ally through the chamber. Heating elements of nicrome wire are placed in the air path and are duly insulated from the body. The inner chamber is ribbed for placement of shelves at desired height. Full view inner glass door permits inspection of specimens, without disturbing the same, lock and key arrangement Is provided in the double walled outer door. Unit is fitted with door operated illumination lamp inside the chamber.

The temperature range from 5 degree c to 50 degree c is controlled by two **EGO/JUMO** German double action hydraulic capillary thermostat. Refrigeration unit is formed by Hermetically sealed isi marked compressor and the cooling coils are distributed all round the chamber and lie in the air circulation path. An l-shaped prismatic Thermometer is provided at the top on the front panel along with separate indicator lamps for mains, heating and incoming voltage. Supplied complete with 3 shelves, cord and plug to work on 220/230v A.C. Supply.

B.O.D. Incubator with vertically illumination with 3 numbers of fluoroscent tubes of 60 cm. length placed vertically along the back wall, separate on/off switch for tubes.

B.O.D. Incubator incorporated with timer 0-24 hour for regulation cyclic at an extra cost.

B.O.D. Incubator for incubation in CO₂ of air mixture could be provided with an inlet nozzle on the side of control panel providing a means for admitting or CO₂ of air/ CO₂ mixtures. Similar nozzle is provided for monitoring CO₂ concentration at an extra cost.

Digital temperature indicator cum controller with PT-100 sensor at an extra cost instead of mercury thermometer.

BACTERIOLOGICAL INCUBATOR

These are sturdy double walled units with outer chamber made of **MS sheet duly enamel painted** with inner made up of anodized aluminum or high SS sheet. The gap between inner and outer chamber is filled with high grade glass wool to avoid thermal losses. Heating elements are placed in ribs, at bottom and sides. Inner chamber is provided with ribs for adjusting perforated shelves to convenient height. The door is fitted with glass viewing window to facilitate inspection of samples without disturbing the test temperature.

Temperature is controlled by hydraulic type capillary thermostat from ambient to 70 degrees Celsius ± 5 degree. An 'L' shaped prismatic thermometer is fitted to the unit for reading the chamber temperature. Air ventilators are provided on the sides of the unit. The unit works on 220/230VAC supply.



Available sizes:-

- 300x300x300 (12"x12"x12")
- 350x350x350 (14"x14"x14")
- 400x400x400 (16"x16"x16")
- 450x450x450 (18"x18"x18")
- 600x450x450 (24"x18"x18")
- 600x600x600 (24"x24"x24")
- 900x600x450 (36"x24"x18")
- 900x600x600 (36"x24"x24")
- 900x900x900 (36"x36"x36")
- 900x900x900 (36"x36"x36")

Air circulating fan to cost extra

Digital temperature indicator cum controller (while ordering for an incubator with an digital controller, air circulating fan is considered compulsory and should be ordered along with it)

Timer (0-24 hours) to cost extra.

CENTRIFUGE MACHINE



Owing to the expertise of our professionals, we have been manufacturing and supplying a range of premium grade Centrifuge Machine. The machine is fixed with a base and a rotating element where the mixture is revolved at a high speed. One of the important features of our Laboratory Centrifuge Machine is that it has high tensile, which helps it in revolving at a strong force. Using Centrifugal force, the machine is capable of rotating the material of different densities easily. It is capable of separating solid and liquid parts of the and helps in purifying the vaccines.

Technical specification:

This centrifuge having better speeds and capacities fitted with resiliently mounted for vibration free performance and 5 step regulator

Body made of steel duly powder coated paint finish.

Round lid with handle available in 8 tubes

Available in

4 Tubes

6 Tubes

8 Tubes

CHEMICAL BALANCE



We are manufacturing a wide range of Chemical Balance for our customers.

Technical Specifications:

Beam:

Short beam of hard brass

Upper edge divided into 50 scale divisions to each side

Each scale division representing 1/5 mg

Rider on the scale

Stand: all parts of brass

Arrester: vertical raising type

Pans: chromium plated, slightly concave inwards

Case: wooden polished case, with front slider and two side doors.

Base: sun mica black board

Capacity: 200gms

Sensitivity: 1/5 mg

Features:

Precise measurement

Durable

DOUBLE DISTILLATION UNIT VERTICAL ALL GLASS

- The assembly consists of a corning glass flask with embedded heating elements fused in spiral type glass coil internally at bottom. A double wall.
- Coiled condenser has standard ground glass joints. Complete with glass fitting, metallic stand rings, clamps and electrical fittings. The unit supplied is as per NPL patent design. To work on 220/230 volts A.C.supply.
- Available in single ,double or triple stage as required.



Available in the following sizes ← 3 Liters, 5 Liters, 10 Liters

OPTIONAL ACCESSORIES

- Automatic water cut off device in case water supply is stopped. This is a solid state transistorized device which automatically keeps watch on regular supply of water in the flask and keeps the heaters On only when the water supply is normal. It automatically cuts OFF the supply of heaters from the mains when the water supply get disturbed and thus prevents the burning of heating element/melting of glass coil. Heaters would automatically be switched ON when the water comes to normal.
- Special grade rubber tumbling for connections(coil of 10 meters).

HAEMATOCRIT CENTRIFUGE DIGITAL 16000 R.P.M

INDOSATI™
MED. PHARMACY LAB INSTRUMENTS
TRADE MARK NO.-4463564



Haematocrit Centrifuge Digital 13000 R.P.M microprocessor based, Digital timer R.P.M meter and programmable speed regulator, Supply complete with rotor+reading device+1 Pkt. capillaries, 1 Pc Wax sealing tray and instruction manual.

Type of Product	Haematocrit Centrifuge
Maximum Speed	13000 rpm
Weight:	11 Kg
Dimension (mm)	290 x 270 x 240 mm

Manufacturers & Exporters

THE INDO SATI INSTRUMENTS & CHEMICALS

MEDICAL LAB D,B&M PHARMACY COLLEGES/INSTITUTIONS

D & B D-U-N-S NUMBER -91-652-0568 Govt Reg. No.-NSIC/GP/NTP/2022/98624

#3674, TIMBER MARKET, Ambala Cantt - 133 001 (INDIA) Tel No.: 0091-171-4000131 / 4001131

E & OE

DIGITAL HOT AIR OVEN



These are sturdy double walled units with outer chamber made of MS sheet duly enamel painted with inner made up of anodized aluminum or high SS sheet. The gap between inner and outer chamber is filled with high grade glass wool to avoid thermal losses. Heating elements are placed in ribs, at bottom and sides. Inner chamber is provided with ribs for adjusting perforated shelves to convenient height. The

Temperature is controlled by hydraulic type capillary thermostat from ambient to 250 degrees Celsius ± 5 degree. An 'L' shaped prismatic thermometer is fitted to the unit for reading the chamber Temperature. Air ventilators are provided on the sides of the unit. The unit works on 220/230VAC supply.

INSIDE CHAMBER SIZE (WxHxD) in mm.

300x300x300	2
355x355x355	2
455x455x455	2
605x605x605	2
605x455x910	3
605x605x910	3

OPTIONAL ACCESSORIES

- {Air circulating fan to cost extra.
- {Digital temperature indicator cum controller (while ordering for an incubator with an digital controller, air circulating fan is considered compulsory and should be ordered along with it)
- {Timer (0-24 hours) to cost extra.

LAMINAR AIR FLOW HORIZONTAL WOODEN

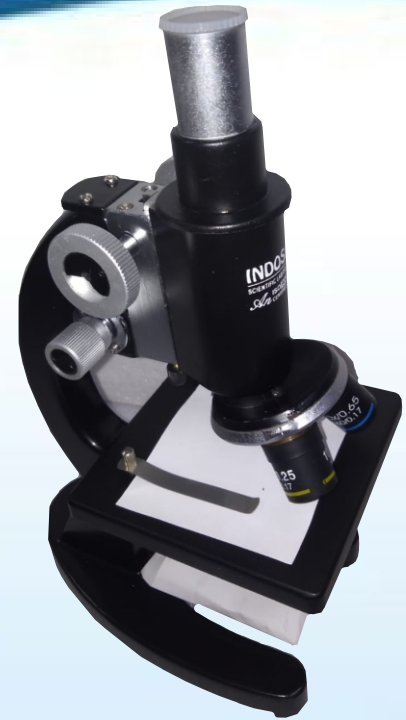


Switches :	Switches for blower, LED light & UV light.
Pre-filter :	90.00% down to 5 micron
HEPA Filter :	ISO 14644 Class 5 (Class 100) 99.97%-99.99% down Down to 0.3 micron. Mesh guard for protection of HEPA Filter.
Airflow :	Frontward Horizontally.
Noise Level :	60 decibel \pm 5%.
Velocity :	0.35-0.50m/sec
Work Table :	Made up of Stainless Steel 304gr. Cock for gas on work table.
Side Panels:	6mm \pm 0.5mm thick acrylic sheet.
Front door:	Made of acrylic. (Foldable)
UV Lamp :	15/30W, make Philips Holland.
Illuminationr:	LED White Light
Pressure:	Inclined Manometer 0-50mm range.
Power Supply :	230V \pm 10V/50Hz single phase A.C.
Cabinet :	19mm thick Dura-board Covered with mica from outside and epoxy painted from inside.
Heavy Duty Blower:	Dynamically balanced with 0.25 HP Electric Motor Mounted on anti vibration pad1440rpm motor.

Available Size:

- Working area size 60x60x60 cm
- Working area size 90x60x60 cm.
- Working area size 120x60x60 cm.
- Working area size 180x60x60 cm.

STUDENT MICROSCOPE



DESCRIPTION:-

Body:-Well designed heavy & sturdy die-casted monocular body inclinable to 90° suitable to meet the needs of college and school students.

To be with mechanical length 160mm.

Focusing by separate coarse fine focusing knobs with triple revolving nose piece, horse shoe base.

Square stage 120x120mm with clips for holding the slide.

Double lens bright field ABBE Condenser(N.A. 1.25) is fixed with the stage with iris diaphragm and swing out filter holder.

Illumination by plano concave mirror in fork mount.

Optical Combination:

Anti Fungal Objectives:4/5x, 10x, 45x(SL)

Eye Piece:10x, 15x(Huygenian)

Packing: In thermocouple case with dust cover.

MEDICAL MICROSCOPE



DESCRIPTION:-

Body:- well designed heavy & sturdy die-casted monocular body inclinable to 90° specially recommended for Pathological labs, Doctors and Medical colleges.

Pathological Microscope having coarse focusing rack & pinion and sensitive fine graduated slow motion reading to .002mm.

Sub Stage ABBE Condenser(N.A. 1.25) is moveable on rack & pinion motion and has an iris diaphragm and swing out filter holder. Fitted with quadruple revolving nose piece and fixed stage size 120x120mm with precision mechanical stage for xandy movement of slide with slide safety stopper.

Microscope is Inclinable thorough 90° with mechanical tube length 160mm.

Illumination by plano concave mirror 50mm dia in metallic fork replaceable by sub stage pin type lamp 220V/15W(optional).

Square stage 120x120mm with detachable mechanical stage for x and y movement. Double lens ABBE Condenser(N.A. 1.25) with iris diaphragm, having swing out filter holder movable by rack & pinion.

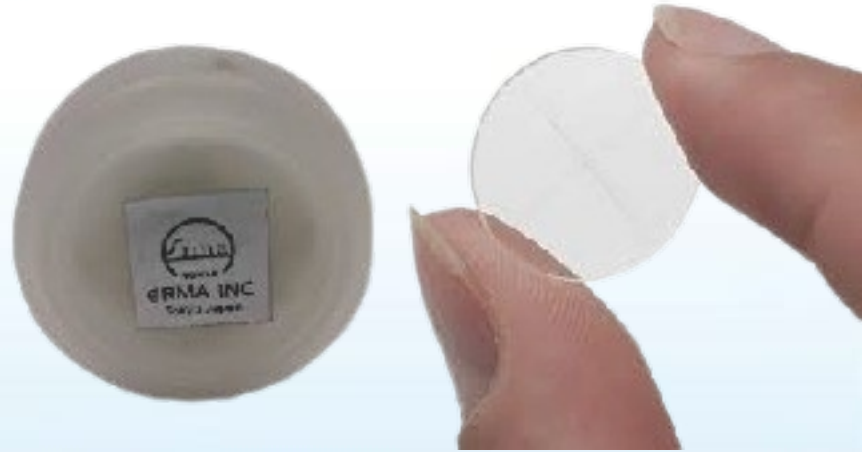
Optical Combination:

Anti Fungal Objectives: 10x, 40/45x (SL),
100x(oil immersion)

Eye piece: 10x(wide field) 5x/15x(Huygenian)

Packing: We serve the Microscope in a packing of thermocole, covered in wooden case to avoid single chance of breakage

OCCULAR MICROMETER



We are enlisted amongst the reckoned names in the industry, offering wide array of Occular Micrometer that are quality approved and are offered with flawless finishing. Our ranges of Occular Micrometer are superior in quality and accurate in dimension. They are known for their long life and excellent performance. They provide the excellent results to the user with any trouble during their use. Our products are known for their reliability. We are committed for the time frame execution for our assignments along with unmatched quality.

Features:

High quality

Dimensionally accurate

Abrasion resistant

OVERHEAD PROJECTOR



Specification:-

- Working Stage of 250mm x 250mm
- Folding arm for head for easy storage .Anti glare Fresnel lens
- External quick lamp changer
- Twin halogen lamps,24VV,250VV
- Lens 1-element $f=275$
- Light output of 2500+Lumens
- Retractable Transparency locating pins. Titling angle 0-60
- Head rotation 360
- Condenser Lens
- Safety cut switch
- Forced air cooling system(Twin fan)
- Power cord of 3 mtrs. standard detachable
- Tridoal Transformer
- Packing size 490x460x320mm

Standand Accessories :

- Two nos. glass fuse
- One No. cleaning cloth
- Dust cover packed with thermocole in sturdy cardboard box.

Manufacturers & Exporters

THE INDO SATI INSTRUMENTS & CHEMICALS

MEDICAL LAB D,B&M PHARMACY COLLEGES/INSTITUTIONS

D & B D-U-N-S NUMBER -91-652-0568 Govt Reg. No.-NSIC/GP/NTP/2022/98624

#3674, TIMBER MARKET, Ambala Cantt - 133 001 (INDIA) Tel No.: 0091-171-4000131 / 4001131

E & OE

SEROLOGICAL/CONSTANT TEMPERATURE WATER BATH



This unit are double walled with inner chamber made up of stainless steel and outside of mild steel duly enamel painted. The gap between the walls is fitted with special grade glass wool in order to avoid thermal losses. The inner chamber fitted with immersion type heating element is covered with perforated removable diffuser tray. Top cover is provided with the unit as a standard accessory.

Temperature from ambient to 90 degree c is controlled by hydraulic capillary type thermostat or digital controller with an accuracy of ± 0.5 degree c. supplied complete with 220/230 volts AC supply.

INSIDE CHAMBER SIZE (WxHxD) in mm.	LOAD
300x250x175	1.0KW
330x300x175	1.5KW
455x300x175	2.0KW
605x300x175	3.0KW

OPTIONAL ACCESSORISE

- Stirrer with 1/20 H.P. high speed motor with S.S rod and blade.
- Digital Temperature Indicator-Cum-Controller.

STAGE MICROMETER



Stage Micrometer Accurately measures specimen under the microscope with scales attached in a glass microscope slide. The 1mm scale is divided to 100 accurate parts and comes in a standard 1” x 3 “ slide protected by cover slip.

Microscopes can be used not only to look at small things but also to measure them. Items seen in microscopes are very small, even a few millimeters are too big. As a result, micrometers are used. The micrometer is divided into ocular micrometer and stage micrometer, and two kinds of micrometer are used together.

Size	1x3 in
Usage/Application	Microscope Scale
Material	Glass
Brand	ERMA
Type	High quality Glass
Range	1mm
Accuracy	0.01 mm
Features	Perfect engraving

INSTRUMENTS STERILIZER PORTABLE ELECTRIC



INSTRUMENTS STERILIZER PORTABLE ELECTRIC

Features with high-grade components and excellent performance, the sterilizer are ideal for decontamination of hospital instruments the latest technology is incorporated to ensure reliability & durability.

Benefits :

- Electrically Operated
- Thermostatic Operated
- Thermostatic Device to Control Temperature of Water
- Complete with Auto Tray Lift Arrangement
- Made of stainless steel

Size:

20"x8"x6"

17"x8"x6"

12"x6"x5"

MERCURY THERMOMETER



Specification

1. Chemical thermometer (mercury) 360 degree
2. Pack of 10 made from yellow capillary, mercury filled by heat process, calibrate under controlled conditions, approx. 12 inches long and 7-8 mm thick.
3. This thermometer for temperature measurement in a rang of-10 to 360 degree.
4. A good choice for classroom and laboratory use.
5. Each thermometer packed in plastic case and pack of ten.

DIGITAL VDRL SHAKER



Specification:-

- ❖ Compact shaker for mixing sample
- ❖ Wide Speed Range
- ❖ Timer option for accurate mixing time
- ❖ RPM controller knob and digital Timer available for exact results
- ❖ Stable at high speeds
- ❖ Separate platform attachment available for mixing more than one samples

Technical Data :

Brand:	Indosati
Material:	Mild Steel
Type of movement :	Rotational
Speed Range:	0-180 rpm
Operation Mode:	Continuous Operation
Timer range:	1-99 minutes
Dimensions :	33x33x18cm.
Weight:	11 kg
Permissible Ambient Temperature:	5-40 degrees
Permissible relative moisture:	80%
Motor type:	PMDC motor
Speed Display :	None
Time Display:	Yes
Power Supply :	220V, 50hz
Time Display:	Yes
Power Supply :	220V, 50hz

Manufacturers & Exporters

THE INDO SATI INSTRUMENTS & CHEMICALS

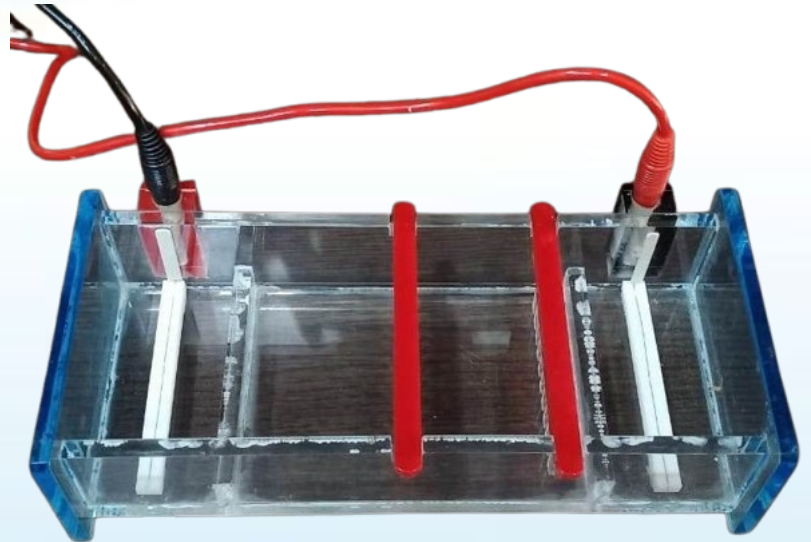
MEDICAL LAB D,B&M PHARMACY COLLEGES/INSTITUTIONS

D & B D-U-N-S NUMBER -91-652-0568 Govt Reg. No.-NSIC/GP/NTP/2022/98624

#3674, TIMBER MARKET, Ambala Cantt - 133 001 (INDIA) Tel No.: 0091-171-4000131 / 4001131

E & OE

HORIZONTAL GEL ELECTROPHORESIS



SPECIFICATION:-

Gel Electrophoresis system vertical mini with glass plates, combs. Leak proof, Moulded in single piece made of polycarbonate.99.9% pure platinum wire is used in electrode.

Usage	Laboratory
Material	Acrylic
Connecting Cord	Red & Black
Including	Acrylic Chamber-1,Spatula-1,Lid-1,Combs-2,Cord-2

Features:

- Superior performance
- Long Service life
- Optimal quality

WATER BATH THERMOSTATIC



It is double walled with inner chamber made of stainless steel and outer wall of M.S sheet duly enamel painted. The gap between outer and inner walls is fitted with special grade glass wool insulation. The concentrate rings can be removed to accommodate containers of various sizes.

Temperature from ambient to $90 \text{ }^{\circ}\text{C} \pm 0.5 \text{ }^{\circ}\text{C}$ is controlled by "EGO"/"JUMO"GRMAN thermostat.

AVAILABLE SIZES:

300x250x100 m.m . (6 holes of 75 m.m dia)

300x405x100 m.m. (12 holes of 75 m.m dia)

Optional Accessories

Digital Temperature Indicator-Cum-Controller.

WATER STILL WALL MOUNTED S.S



The unit is recommended for making progeny free distilled water of a very high degree of purity. Made out of stainless steel, special kettle element is fitted with ejection device/auto cut for safety of the element in case water supply is stopped. The cock fitted to the unit is of brass C.P. Distillation with or without FLANGE SYSTEM can be supplied. Unit with flange system can be opened for cleaning of condenser from time to time so as to ensure its long life. A wall mounting clamp is provided with the unit but rubber tubing. Supplied with cord and plug to work on 220/230volts A.C. supply Available in capacities of approx. 4&6liters

Brand	Indosati
Material	Stainless Steel
Capacity	4,6 Liters
No of element	1 or 2

AUTO COLORIMETER PHOTOELECTRIC



Specification:-

The efficient and precise Digital Photo Colorimeter is one of the finest Digital Photo Colorimeters. Digital Photo Colorimeters are available with 8 and 5 filters respectively. The output is available on a 2½ digit red LED display in terms of Optical Density (OD) with Accuracy of $\pm 0.5\%$ FSD ± 1 digit. High standard glass filters covering the complete visible range from 400-700nm are mounted on a rotating disc, 6.8V Tungsten Lamp as a light source and a highly sensitive photocell makes the instrument rugged, accurate and are very economical in maintenance. The Battery/Mains Operated Models of Digital Colorimeters are also available.

A minimum sample volume of 1 ml. is required to carry out the analysis. Provision has been made to switch-on the lamp source only when required, thereby increasing the life of the photo diode. This Digital Photo Colorimeter is extremely useful for quantitative estimation of several chemical substances including blood chemistries in chemical/clinical laboratories, pharmaceutical industries, medicine plants, water treatment plants, agriculture universities, etc.

Product Details:-

Wavelength Range	700 nm
Minimum Volume	1 ml
Std Glass Filters	8 Filters
Display	2 1/2 Digit LED Display
Brand	Indosati
Model No / Item Code	066-G
Absorbance	1.99
Accuracy	0.5 % FSI
Detector	Silicon Photodiode
Filter Range	680 nm
Light Source	6.8 V

AUTOCLAVE VERTICAL DOUBLE WALLED SEMI-AUTOMATIC



Specification:-

Electrically heated vertical sterilizer is used for sterilization of surgical instruments dressing materials linen rubber, plastic material by means of saturated steam under pressure of 15 to 20 psi (adjusted) apart from health services it is also used in scientific research laboratories, educational institutions and universities.

Sturdy double walled construction with boiler inner chamber made of stainless steel of 18 SWG sheet. Outer shell is made of stainless steel.

The boiler and outer shell is provided with air insulation. Lid is made of stainless steel plate and is tightened all-around by wings nuts. Molded, joint less gaskets are made of Neoprene rubber. Sterilizer is hydraulically tested up to 40 p.s.i. Sterilizer is hydraulically tested up to 40 p.s.i.

Autoclaves are fitted with water level arrangements to indicate water position inside the boiler, pressure gauge, air/steam release cock, spring loaded safety valve which can be set at any selected point from 10 p.s.i., +3 p.s.i. and drain cock.

Available in following sizes:

	Dia x depth.	Ratings
a.	250 x 450 mm.	1.5 K.W.
b.	300 x 500 mm.	2.0 K.W.
c.	350 x 550 mm	3.0 K.W.
d.	400 x 600 mm	4.0 K.W.
e.	550 x 750 mm	6.0 K.W.

OPTIONAL ACCESSORIES :

- 1 **Automatic Pressure cut-off switch**
- 1 **Low water level cut-off device**
- 1 **Automatic german timer**

DIGITAL LABORATORY INCUBATOR

These are sturdy double walled units with outer chamber made of **MS sheet duly enamel painted** with inner made up of anodized aluminum or high SS sheet. The gap between inner and outer chamber is filled with high grade glass wool to avoid thermal losses. Heating elements are placed in ribs, at bottom and sides. Inner chamber is provided with ribs for adjusting perforated shelves to convenient height. The door is fitted with glass viewing window to facilitate inspection of samples without disturbing the test temperature.

Temperature is controlled by hydraulic type capillary thermostat from ambient to 70 degrees Celsius ± 5 degree. An 'L' shaped prismatic thermometer is fitted to the unit for reading the chamber temperature. Air ventilators are provided on the sides of the unit. The unit works on 220/230VAC supply.



Available sizes:-

- 300x300x300 (12"x12"x12")
- 350x350x350 (14"x14"x14")
- 400x400x400 (16"x16"x16")
- 450x450x450 (18"x18"x18")
- 600x450x450 (24"x18"x18")
- 600x600x600 (24"x24"x24")
- 900x600x450 (36"x24"x18")
- 900x600x600 (36"x24"x24")
- 900x900x900 (36"x36"x36")
- 900x900x900 (36"x36"x36")

Air circulating fan to cost extra

Digital temperature indicator cum controller (while ordering for an incubator with an digital controller, air circulating fan is considered compulsory and should be ordered along with it)

Timer (0-24 hours) to cost extra.

BOTTLE TOP DISPENSER



SPECIFICATION:

Brand	Indosati
Color	Blue
Material	PTFE Teflon
Usage/Application	Liquid handling lab equipment
Autoclavable	Yes
Function	Spring less technology function

Bottle Top Dispenser (BTD):

- BTD that works on Springless Valve Technology.
- It is a high precision liquid handling instrument that offers a sophisticated blend of features and functionality.
- Available in Six Unique Volume Ranges.

CHROMATOGRAPHY CHAMBER



Specification:-

Made of teakwood with glass on four sides and on top. Internal surface wax coated for solvent resistance. Hinged top provided with rubber gasket for air tight closing. Window with air tight door in lower portion. Heavy castors provided for easy movement. Nicely polished. Supplied with two stainless steel troughs and 4/6 glass rods.

Product Specification:

Material	Teakwood polished
No of wheel castors	4
Sidewall material	Glass.
Supplied with	two stainless steel troughs

COMPOUND MICROSCOPE



Specification:-

Rotable head binoculars with WF 10x and H15x eyepieces (two pairs).
Parfocal objectives with achromatic coatings: 4x, 10x, 45x (SL), 100x oil 1mm.
Focus system with safety stopper from Rack & Pinion. Fine focus via mechanical stage, substage condenser with iris diaphragm, and graduated plain rectangular stage with 1 div. = 0.02 mm slow motion mechanism.
Included solid state variable control input 220V AC, built-in 6v 20W halogen bulb. Thermocol packaging includes a dust cover, instruction manual, blue filter, 10ml of 1mm oil, and one bulb.

SEROLOGICAL/CONSTANT TEMPERATURE WATER BATH



This unit are double walled with inner chamber made up of stainless steel and outside of mild steel duly enamel painted. The gap between the walls is fitted with special grade glass wool in order to avoid thermal losses. The inner chamber fitted with immersion type heating element is covered with perforated removable diffuser tray. Top cover is provided with the unit as a standard accessory.

Temperature from ambient to 90 degree c is controlled by hydraulic capillary type thermostat or digital controller with an accuracy of ± 0.5 degree c. supplied complete with 220/230 volts AC supply.

INSIDE CHAMBER SIZE (WxHxD) in mm.	LOAD
300x250x175	1.0KW
330x300x175	1.5KW
455x300x175	2.0KW
605x300x175	3.0KW

OPTIONAL ACCESSORISE

- Stirrer with 1/20 H.P. high speed motor with S.S rod and blade.
- Digital Temperature Indicator-Cum-Controller.

VACUUM DESICCATOR



Desiccator are made of polypropylene and polycarbonate. These autoclavable vacuum desiccator can hold vacuum up to 740 mm of Hg for 24 hrs. without any greasing.

The top dome, molded in rigid and transparent polycarbonate, gives a crystal clear view of the desiccant placed inside. The knurled knob on the top provides easy handling of the dome. The lower part is made of polypropylene.

An internal groove is provided on the flange to hold a silicon rubber O-ring.

The polypropylene stopcock is fitted with a self lubricating PTFE plug. This plug works three way i.e. vacuum creation, shutting off & vacuum releasing.

DOUBLE DISTILLATION UNIT

VERTICAL ALL GLASS

- The assembly consists of a corning glass flask with embedded heating elements fused in spiral type glass coil internally at bottom. A double wall.
- Coiled condenser has standard ground glass joints. Complete with glass fitting, metallic stand rings, clamps and electrical fittings. The unit supplied is as per NPL patent design. To work on 220/230 volts A.C.supply.
- Available in single ,double or triple stage as required.



Available in the following sizes ← 3 Liters, 5 Liters, 10 Liters

OPTIONAL ACCESSORIES

- Automatic water cut off device in case water supply is stopped. This is a solid state transistorized device which automatically keeps watch on regular supply of water in the flask and keeps the heaters On only when the water supply is normal. It automatically cuts OFF the supply of heaters from the mains when the water supply get disturbed and thus prevents the burning of heating element/melting of glass coil. Heaters would automatically be switched ON when the water comes to normal.
- Special grade rubber tumbling for connections(coil of 10 meters).

VISIBLE SPECTROPHOTOMETER



STANDARD ACCESSORIES:

Glass Cell 10mm
Power Cord
Instruction Manual

SALIENT FEATURES:

Extremely easy to set up & simple to use
Monochromator with a holographic flashing grating
High wavelength precision, good monochromatic and low stray light
Direct read out of Absorption(ABS), Transmittance(%T), Concentration(C) & concentration setting function

SPECIFICATIONS:

Optical System	CT Single Beam, Grating 1200 lines/mm
Wavelength Range	320~1020 nm
Spectral Bandwidth	2 nm
Wavelength Interval	1 nm
Wavelength Accuracy	± 2 nm
Wavelength Repeatability	1 nm
Photometric Accuracy	±1%T
Photometric Repeatability	0.5%T
Photometric Range	0 -1.999A, 0-199.9%T
Stray Light	≤0.3%T@340nm
Stability	±0.004A/h @500nm
Detector	Silicon Photodiode
Light Source	Tungsten Lamp
Power Supply	AC 220V / 50Hz
Dimensions & Weight	450 × 520 × 320 mm & 10 kgs
Display & Photometric Mode	4 Digit LCD & Mode: T, A, C

Manufacturers & Exporters

THE INDO SATI INSTRUMENTS & CHEMICALS

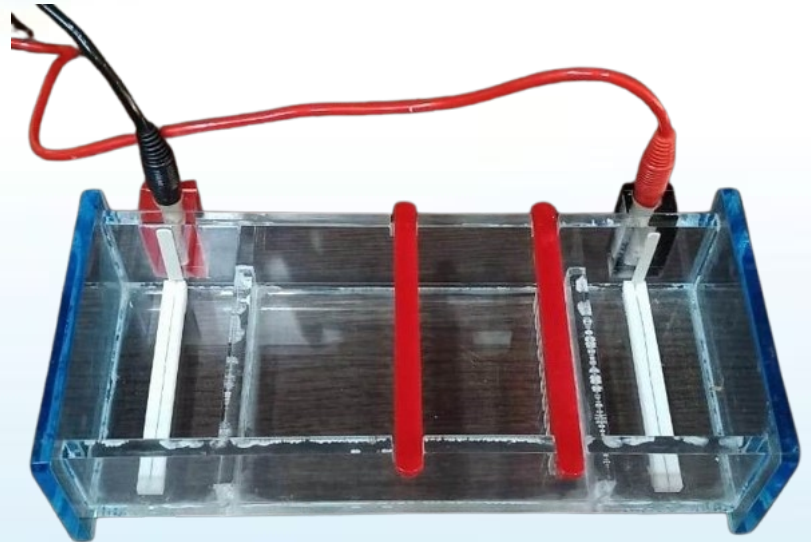
MEDICAL LAB D,B&M PHARMACY COLLEGES/INSTITUTIONS

D & B D-U-N-S NUMBER -91-652-0568 Govt Reg. No.-NSIC/GP/NTP/2022/98624

#3674, TIMBER MARKET, Ambala Cantt - 133 001 (INDIA) Tel No.: 0091-171-4000131 / 4001131

E & OE

HORIZONTAL GEL ELECTROPHORESIS



SPECIFICATION:-

Gel Electrophoresis system vertical mini with glass plates, combs. Leak proof, Moulded in single piece made of polycarbonate.99.9% pure platinum wire is used in electrode.

Usage	Laboratory
Material	Acrylic
Connecting Cord	Red & Black
Including	Acrylic Chamber-1,Spatula-1,Lid-1,Combs-2,Cord-2

Features:

- Superior performance
- Long Service life
- Optimal quality

DIGITAL FLAME PHOTOMETER



Digital Flame Photometer is a photoelectric flame photometer device used in inorganic chemical analysis to determine the concentration of certain metal ions like Sodium, potassium, Calcium, Lithium and Barium. Rugged and Scientific Instrument to determine the concentration of inorganic chemical analysis like Sodium, Potassium, Calcium, Lithium, Barium in any solution. This is an ideal instrument for Clinical, Medical, Bio-Medical and Soil Testing Laboratories.

Additional Information:

Packaging Details: Accessories- Air Pipe, Gas Pipe, Waste Water Pipe, Chimney, Beaker Box (Set of 5 Beakers), Power Cord, Capillary Tube, Instruction manual, Dust Cover.

Mobility	Portable
Sensitivity	5%
Accuracy	2 %
Brand	Indosati
Weight	16 KG
Detector	Silicon Photodiode
Power	230V AC, 50 Hz
Ignition System	Auto Ignition
Voltage	220V
Gas Control	Controlled by Precision Regulator
Flame System	LPG and Dry Oil Free Air
Usage/ Application	Soil Applications
Determination	ppm
Atomizer	Black Bakelite, Axial Flow Type
Filters	Narrow Bandwidth Interference Glass Filters
Display	Digital
Frequency	60 Hz

Manufacturers & Exporters

THE INDO SATI INSTRUMENTS & CHEMICALS

MEDICAL LAB D,B&M PHARMACY COLLEGES/INSTITUTIONS

D & B D-U-N-S NUMBER -91-652-0568 Govt Reg. No.-NSIC/GP/NTP/2022/98624

#3674, TIMBER MARKET, Ambala Cantt - 133 001 (INDIA) Tel No.: 0091-171-4000131 / 4001131

E & OE

FUME HOOD MILD STEEL



Specification

- Made of Mild Steel duly powder coated.
- Granite Working Platform.
- High Speed Centrifugal Blowers.
- Front Sash with counter weights.
- LED illumination lights.
- Water tap and PP sink.
- Provision for gas and air Connection Storage cup board.
- Storage cup board.
- 15/5 Amp Switches and Socket.

Available Size:-

- Working area size 90x60x60 cm
- Working area size 120x60x60 cm.
- Working area size 120x75x75 cm.
- Working area size 150x75x75 cm.

Manufacturers & Exporters

THE INDO SATI INSTRUMENTS & CHEMICALS

MEDICAL LAB D,B&M PHARMACY COLLEGES/INSTITUTIONS

D & B D-U-N-S NUMBER -91-652-0568 Govt Reg. No.-NSIC/GP/NTP/2022/98624

#3674, TIMBER MARKET, Ambala Cantt - 133 001 (INDIA) Tel No.: 0091-171-4000131 / 4001131

E & OE

LABORATORY HOMOGENIZER



Specification

Display Type	Analog
Speed Range	0-4000 RPM
Power Rating	500
Power Supply	220V
Operation Type	Electric operated
Motor Type	AC Universal
Impeller	Tissue Glass Teflon Tube
Weight	10 Kg

Package Contents

- Homogenizer
- Instruction Manual
- Stand
- Clamp
- Teflon Impeller

DIGITAL HOT AIR OVEN



These are sturdy double walled units with outer chamber made of MS sheet duly enamel painted with inner made up of anodized aluminum or high SS sheet. The gap between inner and outer chamber is filled with high grade glass wool to avoid thermal losses. Heating elements are placed in ribs, at bottom and sides. Inner chamber is provided with ribs for adjusting perforated shelves to convenient height. The

Temperature is controlled by hydraulic type capillary thermostat from ambient to 250 degrees Celsius ± 5 degree. An 'L' shaped prismatic thermometer is fitted to the unit for reading the chamber Temperature. Air ventilators are provided on the sides of the unit. The unit works on 220/230VAC supply.

INSIDE CHAMBER SIZE (WxHxD) in mm.

300x300x300	2
355x355x355	2
455x455x455	2
605x605x605	2
605x455x910	3
605x605x910	3

OPTIONAL ACCESSORIES

- {Air circulating fan to cost extra.
- {Digital temperature indicator cum controller (while ordering for an incubator with an digital controller, air circulating fan is considered compulsory and should be ordered along with it)
- {Timer (0-24 hours) to cost extra.

MAGNETIC STIRRER



It has a compact stirring device utilization a rotating magnetic field (created by a PERMANENT MAGNET) which induces variable speed stirring action. Stirring is accomplished by means of small TEFLON rotor, which when placed in the liquid to be stirred is capable of rotation by magnetic field applied from below the container. The unit is fitted with pilot lamp. To work on 2220/230 volts A.C. available with or without hot plate (as required).

Heating Temperature Range :	Ambient 250 degree
Speed Range:	200-1250 rpm
Heating Plate material:	Polished MS
Motor Rating:	9/4 W
Heat Output:	450 W
Stirring Bar Length max:	80mm
Permissible ambient temperature:	5-40 degree
Voltage:	220V
Frequency:	50/60 Hz

RESEARCH BINOCULAR MICROSCOPE



DESCRIPTION:-

Body: Well designed die-casted body staple grey & black contrast with hard instrumental chromium finish.

Observation Head: Special quality Binocular observation head inclined at 45° & rotatable through 360°. All prism & optical surface are anti reflection coated. Standard interpupillary distance & diopter adjustment provided.

Nose Piece: Dust proof quadruple nose piece with click for perfect optical alignment.

Stage: Fixed stage 140mm x 120mm with built in co-axial mechanical stage for easy and smooth bearing.

Condenser: Double lens bright field Abbe's condenser N.A. 1.25 with iris diaphragm movable by rack & pinion.

Illumination: By halogen lamp 6v 20watts operated through built in solid state transformer with electronic regulator.

Safety Stopper: Prevent damage to slides and objectives.

Optics: High class anti reflection coated self centres & parafocal achromatic objectives & superior quality eye pieces.

Packing: In dust proof thermocole box housed in 12,, thick beautiful storing cabinet with summica door.

OPTICAL COMBINATION

Eyepieces	Objectives	Magnification
Paired 10x W.F.	5x 10x 45x S.L	25x – 1500x
5x or 15x Huy.	100x Oil Imm.S.L	

MICROPIPETTE



DESCRIPTION:-

- **CLICK STOP FACILITY:** The volume is selected, and it remains there even after numerous dispensings without the need to align the scale.
- **EASY ADJUSTMENT:** Just turn the plunger to adjust within its volume range.
- The two-step operation makes it possible to pipette in reverse while working with detergent solution or repeatedly pipetting from the same tip.
- A separate, streamlined tip ejector ensures **SAFE WORKING** with biohazardous chemicals and guards against unintentional detipping.
- The ideal method for filling microstrips and microplates is **MULTI-CHANNEL**.
- A two-year warranty is provided by ALL micropipettes against

VACUUM PUMP OIL FREE



Description-

Capacity	15 Liter
Vacuum	22" HG
Pressure	25 PSIG
HP	1/16
Phase	Single
Volts	230V
Temp.	55°C
RPM	1440RPM
Current	0.2

Manufacturers & Exporters

THE INDO SATI INSTRUMENTS & CHEMICALS

MEDICAL LAB D,B&M PHARMACY COLLEGES/INSTITUTIONS

D & B D-U-N-S NUMBER -91-652-0568 Govt Reg. No.-NSIC/GP/NTP/2022/98624

#3674, TIMBER MARKET, Ambala Cantt - 133 001 (INDIA) Tel No.: 0091-171-4000131 / 4001131

E & OE

SPIRIT LAMP STAINLESS STEEL



An alcohol burner or spirit lamp is a piece of laboratory equipment used to produce an open flame.

Stainless steel & aluminum versions are also offered.

Material	Stainless Steel
Shape	Round
Surface Finishing	Polished
Burning Time	2 Hour
Capacity	150ml
Material Grade	SS304
Burner Diameter	20 Milimeter
Height	4 inch

MERCURY THERMOMETER



Specification

1. Chemical thermometer (mercury) 360 degree
2. Pack of 10 made from yellow capillary, mercury filled by heat process, calibrate under controlled conditions, approx. 12 inches long and 7-8 mm thick.
3. This thermometer for temperature measurement in a rang of-10 to 360 degree.
4. A good choice for classroom and laboratory use.
5. Each thermometer packed in plastic case and pack of ten.

URINOMETER



SPECIFICATION:-

Our organization is one of the most reputable ones that provides customers with urinometers. Using premium materials and cutting-edge manufacturing methods, this product is produced under the close supervision of skilled experts. There are additional sizes of urinometers available for selection. The range that is being offered is valued for its exceptional qualities, which include precise proportions, optimal quality, and a robust design. To guarantee perfection, the offered range is thoroughly examined by knowledgeable quality controllers across a number of criteria. There is a large market demand for this product.

FEATURE:-

- Measurement accuracy
- Prolonged life
- light-weight

VORTEX MIXER



Description:

- Hand mixing is eliminated with a variable speed mixer.
- Suitable for short-time operation (touch function).
- Activated by pressing shaker attachment or continuous operation.
- A robust MS base for vibration dampening, stable at high speeds.
- Suitable for continuous operation with low self heating thanks to self ventilation of motor Interchangeable adapter.

Technical Specifications:

Movement Type:	Orbital
Range of Speed:	0–2500 RPM
Mode of Operation:	Continuous Touch Capability: Certainly
Size	140 x 140 x 190.
Weight In Kg.	1.8
Acceptable Temperature Range:	5° to 40°
Allowable Relative Humidity:	80%
Motor rating	50 Watt
Display	No
Voltage	220-240 V
Frequency	50/60 Hz

Manufacturers & Exporters

THE INDO SATI INSTRUMENTS & CHEMICALS

MEDICAL LAB D,B&M PHARMACY COLLEGES/INSTITUTIONS

D & B D-U-N-S NUMBER -91-652-0568 Govt Reg. No.-NSIC/GP/NTP/2022/98624

#3674, TIMBER MARKET, Ambala Cantt - 133 001 (INDIA) Tel No.: 0091-171-4000131 / 4001131

E & OE

WATER BATH THERMOSTATIC



It is double walled with inner chamber made of stainless steel and outer wall of M.S sheet duly enamel painted. The gap between outer and inner walls is fitted with special grade glass wool insulation. The concentrate rings can be removed to accommodate containers of various sizes.

Temperature from ambient to $90 \text{ }^{\circ}\text{C} \pm 0.5 \text{ }^{\circ}\text{C}$ is controlled by "EGO"/"JUMO"GRMAN thermostat.

AVAILABLE SIZES:

300x250x100 m.m . (6 holes of 75 m.m dia)

300x405x100 m.m. (12 holes of 75 m.m dia)

Optional Accessories

Digital Temperature Indicator-Cum-Controller.

WATER STILL WALL MOUNTED S.S



The unit is recommended for making progeny free distilled water of a very high degree of purity. Made out of stainless steel, special kettle element is fitted with ejection device/auto cut for safety of the element in case water supply is stopped. The cock fitted to the unit is of brass C.P. Distillation with or without FLANGE SYSTEM can be supplied. Unit with flange system can be opened for cleaning of condenser from time to time so as to ensure its long life. A wall mounting clamp is provided with the unit but rubber tubing. Supplied with cord and plug to work on 220/230volts A.C. supply Available in capacities of approx. 4&6liters

Brand	Indosati
Material	Stainless Steel
Capacity	4,6 Liters
No of element	1 or 2

ANALYTICAL BALANCE WOODEN



Specification:-

We offer Analytical Balance used for measuring the weights. Analytical balance made of aluminum alloy which is a highly sensitive balance having 200gm and having a capacity and sensitive to 0.1mg. The balance is staged on synthetic back board and box is made of wood which is well polished and the rider scale is fitted in front of the beam which contains 100 Notches with zero at the center, vertical rating type on knives and planes.

Beam:

Short beam of hard brass

Rider on the scale

Arrester: vertical rating type on knives and planes

Pans: chromium plated, slightly concave inwards

Case: wooden polished case, with front slider and two side doors.

Base: sun mica black board

Capacity: 200gms

Sensitivity: .0.1 mg

Features:

Precise measurement

Durable

AUTOMATIC SLIDE PROJECTOR



Specification:-

- Automatic Slide Project
- Automatic Slide Projector has following specifications:- 85 mm thickness.
- 2.5lenses equipped with halogen lamp.
- Low pressure cooling system.
- Operated through remote control for forward, reverse and fine focusing.
- 36 slides linear magazine with imported mechanical & optical components to achieve brilliant and sharp projections.

BACTERIOLOGICAL INCUBATOR

These are sturdy double walled units with outer chamber made of **MS sheet duly enamel painted** with inner made up of anodized aluminum or high SS sheet. The gap between inner and outer chamber is filled with high grade glass wool to avoid thermal losses. Heating elements are placed in ribs, at bottom and sides. Inner chamber is provided with ribs for adjusting perforated shelves to convenient height. The door is fitted with glass viewing window to facilitate inspection of samples without disturbing the test temperature.

Temperature is controlled by hydraulic type capillary thermostat from ambient to 70 degrees Celsius ± 5 degree. An 'L' shaped prismatic thermometer is fitted to the unit for reading the chamber temperature. Air ventilators are provided on the sides of the unit. The unit works on 220/230VAC supply.



Available sizes:-

- 300x300x300 (12"x12"x12")
- 350x350x350 (14"x14"x14")
- 400x400x400 (16"x16"x16")
- 450x450x450 (18"x18"x18")
- 600x450x450 (24"x18"x18")
- 600x600x600 (24"x24"x24")
- 900x600x450 (36"x24"x18")
- 900x600x600 (36"x24"x24")
- 900x900x900 (36"x36"x36")
- 900x900x900 (36"x36"x36")

Air circulating fan to cost extra

Digital temperature indicator cum controller (while ordering for an incubator with an digital controller, air circulating fan is considered compulsory and should be ordered along with it)

Timer (0-24 hours) to cost extra.

BAND SAW FOR SECTIONING BODY & LIMBS



Our company has set benchmark by offering band saw to the clients. Offered range is available in a range of technical specifications as per the diverse demands of reputed customers. This product is delivered in safe packing for ensuring excellent delivery at clients' end. Band Saw is tested on various technical parameters to ensure good quality.

Features:

- Corrosion resistant
- Long service life
- Sturdily Constructed

BONE & MEAT CUTTING MACHINE



We are one of the trusted manufactures and suppliers of Bone and Meat cutting machine which are used for preparation of specimens of giant anatomical organs. Our Bone and Meat cutting machine is considered to be unique in the market because of

- Fitted with large moving table made from stainless steel
- Extension table operated on four ball bearing rollers
- Special heavy axles for easy and firm movement.
- Power Consumption 220V
- Fitted with premium blade,starter, cord and plug

Specifications:

- | | |
|-------------------------|-----------|
| • Size of cutting blade | 785x585mm |
| • Total Table Travel | 1245mm |
| • Extention Table | 455x760mm |
| • Size of wheel | 455mm |
| • Height | 1700mm |

Manufacturers & Exporters

THE INDO SATI INSTRUMENTS & CHEMICALS

MEDICAL LAB D,B&M PHARMACY COLLEGES/INSTITUTIONS

D & B D-U-N-S NUMBER -91-652-0568 Govt Reg. No.-NSIC/GP/NTP/2022/98624

#3674, TIMBER MARKET, Ambala Cantt - 133 001 (INDIA) Tel No.: 0091-171-4000131 / 4001131

E & OE

BRAIN KNIFE



The brain knife has a double edge and is rounded at the front. It is mostly used in pathology. Indosati transplantation knives have a rounded tip and a very sharp blade, which is angled on the Indosati model. They enable skin flaps to be removed and avoid deep cuts in the tissue

Usage/Application	Hospital
Material	stainless steel
Brand	surgical
Size/Dimension	standard
Length	10 inches

RESEARCH BINOCULAR MICROSCOPE



DESCRIPTION:-

Body: Well designed die-casted body staple grey & black contrast with hard instrumental chromium finish.

Observation Head: Special quality Binocular observation head inclined at 45° & rotatable through 360°. All prism & optical surface are anti reflection coated. Standard interpupillary distance & diopter adjustment provided.

Nose Piece: Dust proof quadruple nose piece with click for perfect optical alignment.

Stage: Fixed stage 140mm x 120mm with built in co-axial mechanical stage for easy and smooth bearing.

Condenser: Double lens bright field Abbe's condenser N.A. 1.25 with iris diaphragm movable by rack & pinion.

Illumination: By halogen lamp 6v 20watts operated through built in solid state transformer with electronic regulator.

Safety Stopper: Prevent damage to slides and objectives.

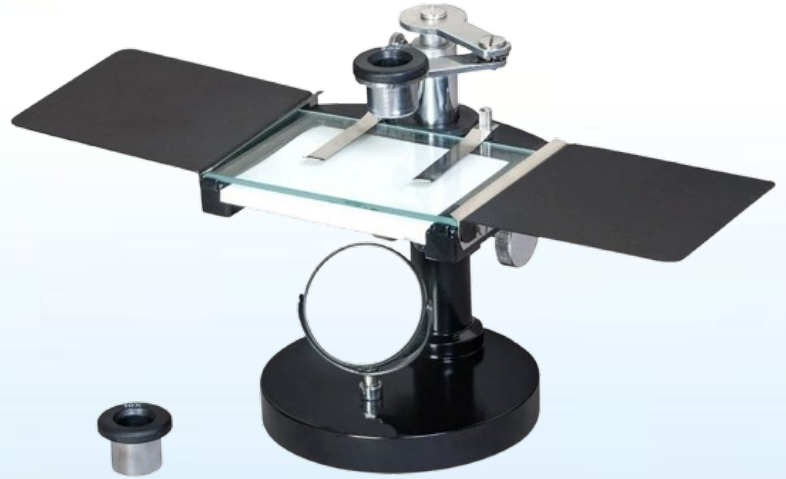
Optics: High class anti reflection coated self centres & parfocal achromatic objectives & superior quality eye pieces.

Packing: In dust proof thermocole box housed in 12,, thick beautiful storing cabinet with summica door.

OPTICAL COMBINATION

Eyepieces	Objectives	Magnification
Paired 10x W.F.	5x 10x 45x S.L	25x – 1500x
5x or 15x Huy.	100x Oil Imm.S.L	

DISSECTING MICROSCOPE



SPECIFICATION:

With the comprehensive industry knowledge of allied domain, we are engaged in presenting a superior quality range of dissecting microscope. It has a heavy round base with precisely designed body. Sensitive focusing is done by rack and pinion arrangement. Revolving arm provided for moving magnifying lens over full stage area. At our manufacturing unit, our engineers have designed the device adhering to international industry standards and using heavy cast material. Besides, clients can get the device from us at industry leading prices.

Features:

- Accurate results
- Easy to use and fix
- Specifications:
- Size available: 85 x 75 mm with glass plate
- illumination: A Plano-concave mirror fitted in fork for light reflection
- Optics: 10 X & 20 X eyepieces

DOUBLE DEMONSTRATION EYE PIECE



This demonstration Eye piece fits any standard 23 mm dia. eye piece, making it possible for two persons to see the same object at the same time. Fitted with a pointer.

Material	Stainless Steel
Usage/Application	Medical Instruments
Packaging Type	Box
Surface Treatment	Color Coated
Eye Piece Size	23 mm dia

CADAVEROUS INJECTOR EMBALMING MACHINE

INDOSATI™
MED. PHARMACY LAB INSTRUMENTS
TRADE MARK NO.-4463564



Introduction –

It is used for injecting formaldehyde solution in cadaverous at much higher speed than normal gravity process. Unit is fully covered & mounted on a portable trolley having four castor wheels for easy movement. Unit consists of one air compressor which is connected with a stainless steel tank of 10 liters capacity meant for storing and injecting the solution incorporated with latest reciprocator pressuring unit for efficient performance. Tank is fitted with a safety valve, pressure gauge and rubber tubing having provision for injection. Supplied complete with electric cord, plug and suitable to work on 220 volts, 1ph 50 hz, ac supply.

How to Use –

1. Fill the formaldehyde solution in tank by funnel before filling released the valve tap of funnel & check the level indication on leveler.
2. Close the funnel valve tap.
3. Inject the syringe in cadaver.
4. Plug in electric cord & start ON the apparatus.
5. The solution flow inside adjust the pressure by syringe pressure valve provided behind the syringe.
6. Fill the solution in cadaver as required by measure provided on leveler.

Manufacturers & Exporters

THE INDO SATI INSTRUMENTS & CHEMICALS

MEDICAL LAB D,B&M PHARMACY COLLEGES/INSTITUTIONS

D & B D-U-N-S NUMBER -91-652-0568 Govt Reg. No.-NSIC/GP/NTP/2022/98624

#3674, TIMBER MARKET, Ambala Cantt - 133 001 (INDIA) Tel No.: 0091-171-4000131 / 4001131

DIGITAL HOT AIR OVEN



These are sturdy double walled units with outer chamber made of MS sheet duly enamel painted with inner made up of anodized aluminum or high SS sheet. The gap between inner and outer chamber is filled with high grade glass wool to avoid thermal losses. Heating elements are placed in ribs, at bottom and sides. Inner chamber is provided with ribs for adjusting perforated shelves to convenient height. The

Temperature is controlled by hydraulic type capillary thermostat from ambient to 250 degrees Celsius ± 5 degree. An 'L' shaped prismatic thermometer is fitted to the unit for reading the chamber Temperature. Air ventilators are provided on the sides of the unit. The unit works on 220/230VAC supply.

INSIDE CHAMBER SIZE (WxHxD) in mm.

300x300x300	2
355x355x355	2
455x455x455	2
605x605x605	2
605x455x910	3
605x605x910	3

OPTIONAL ACCESSORIES

- {Air circulating fan to cost extra.
- {Digital temperature indicator cum controller (while ordering for an incubator with an digital controller, air circulating fan is considered compulsory and should be ordered along with it)
- {Timer (0-24 hours) to cost extra.

HOT PLATE RECTANGULAR

INDOSATI™
MED. PHARMACY LAB INSTRUMENTS
TRADE MARK NO.-4463564



Hot Plate Rectangular mounted on a thick **M.S. sheet body**, a smooth surface **cast iron plate** fitted with an electrically operated element laid under the plate. A three step rotary switch work on 220/230 volts A.C controls heating The plate is finished in heat resistant black and the body in stove blue white.

Available in following sizes

- | | |
|---------------|-------------|
| a) 30 x 25 cm | (12" x 10") |
| b) 40 x 25 cm | (16" x 10") |
| c) 45 x 30 cm | (18" x 12") |
| d) 60 x 45 cm | (24" x 18") |

Manufacturers & Exporters

THE INDO SATI INSTRUMENTS & CHEMICALS

MEDICAL LAB D,B&M PHARMACY COLLEGES/INSTITUTIONS

D & B D-U-N-S NUMBER -91-652-0568 Govt Reg. No.-NSIC/GP/NTP/2022/98624

#3674, TIMBER MARKET, Ambala Cantt - 133 001 (INDIA) Tel No.: 0091-171-4000131 / 4001131

HOT PLATE ROUND



Hot Plate Round mounted on a thick **M.S. sheet body**, a smooth surface **cast iron plate** fitted with an electrically operated element laid under the plate. A three step rotary switch work on 220/230 volts A.C controls heating The plate is finished in heat resistant black and the body in stove blue white.

Double round 20 cm (8") dia, electrically operated 3 heat switch with cord and plug.

INSTRUMENT TROLLEY STAINLESS STEEL



Material	Stainless Steel
Size	660 x 440 x 870 mm
Usage/Application	Hospital/Medical Colleges
Color	Silver
Model Name/Number	Instrument Trolley
Category	Trolley
Shape	Square
Features	with four wheels in full stainless steel.

•

- You can call instrument trolley as well as medical equipment trolley.
- Available in stainless still and mild steel material.
- Available in ss 202 grade and ss 304 grade.
- Comes with high castor wheels with two wheel brakes.
- Available in two shelves and three shelves.
- Customize order also acceptable.
- Premium quality material.

STUDENT MICROSCOPE



DESCRIPTION:-

Body:-Well designed heavy & sturdy die-casted monocular body inclinable to 90° suitable to meet the needs of college and school students.

To be with mechanical length 160mm.

Focusing by separate coarse fine focusing knobs with triple revolving nose piece, horse shoe base.

Square stage 120x120mm with clips for holding the slide.

Double lens bright field ABBE Condenser(N.A. 1.25) is fixed with the stage with iris diaphragm and swing out filter holder.

Illumination by plano concave mirror in fork mount.

Optical Combination:

Anti Fungal Objectives:4/5x, 10x, 45x(SL)

Eye Piece:10x, 15x(Huygenian)

Packing: In thermocouple case with dust cover.

MAGNETIC STIRRER



It has a compact stirring device utilization a rotating magnetic field (created by a PERMANENT MAGNET) which induces variable speed stirring action. Stirring is accomplished by means of small TEFLON rotor, which when placed in the liquid to be stirred is capable of rotation by magnetic field applied from below the container. The unit is fitted with pilot lamp. To work on 2220/230 volts A.C. available with or without hot plate (as required).

Heating Temperature Range :	Ambient 250 degree
Speed Range:	200-1250 rpm
Heating Plate material:	Polished MS
Motor Rating:	9/4 W
Heat Output:	450 W
Stirring Bar Length max:	80mm
Permissible ambient temperature:	5-40 degree
Voltage:	220V
Frequency:	50/60 Hz

MEDICAL MICROSCOPE



DESCRIPTION:-

Body:- well designed heavy & sturdy die-casted monocular body inclinable to 90° specially recommended for Pathological labs, Doctors and Medical colleges.

Pathological Microscope having coarse focusing rack & pinion and sensitive fine graduated slow motion reading to .002mm.

Sub Stage ABBE Condenser(N.A. 1.25) is moveable on rack & pinion motion and has an iris diaphragm and swing out filter holder. Fitted with quadruple revolving nose piece and fixed stage size 120x120mm with precision mechanical stage for xandy movement of slide with slide safety stopper.

Microscope is Inclinable thorough 90° with mechanical tube length 160mm.

Illumination by plano concave mirror 50mm dia in metallic fork replaceable by sub stage pin type lamp 220V/15W(optional).

Square stage 120x120mm with detachable mechanical stage for x and y movement. Double lens ABBE Condenser(N.A. 1.25) with iris diaphragm, having swing out filter holder movable by rack & pinion.

Optical Combination:

Anti Fungal Objectives: 10x, 40/45x (SL),
100x(oil immersion)

Eye piece: 10x(wide field) 5x/15x(Huygenian)

Packing: We serve the Microscope in a packing of thermocole, covered in wooden case to avoid single chance of breakage

OCCULAR MICROMETER



We are enlisted amongst the reckoned names in the industry, offering wide array of Occular Micrometer that are quality approved and are offered with flawless finishing. Our ranges of Occular Micrometer are superior in quality and accurate in dimension. They are known for their long life and excellent performance. They provide the excellent results to the user with any trouble during their use. Our products are known for their reliability. We are committed for the time frame execution for our assignments along with unmatched quality.

Features:

High quality

Dimensionally accurate

Abrasion resistant

MICRO SLIDE CABINET



For storing 3” x 1 slides in vertical position one after the other in a in closed pack manner. Made of steel duly painted. Each drawer moves it's a slots and is removable for easy lifting. Complete with lock and key.

Available Capacities

- 5000 slides
- 10000 slides
- 20000 slides
- 25000 slides
- 50000 slides

SLEDGE MICROTOME LARGE CUTTING



Recently in the histo pathological examination, as for specimens of particularly large area or hard materials as well as for special purposes, very thin specimen such as of 1-3 microns or other sections of various kinds have been increasingly demanded. Large sledge micro tome has been fabricated by improving hitherto used micro tomes providing their inherent characteristics to meet the above requirement. As such this model is highly recommended for all biological and research laboratories for sectioning of soft tissues and also hard materials such as stem, root or other botanical objects etc. It is very suitable also for ear, nose and throat departments where sections of fairly large specimens are required. If incorporated a freezing, attachment, this micro tome can be as a freezing micro tome.

Introduction

This micro tome consists of main body (slide-way), object clamping stage, feeding device and knife clamping block. The body of the micro tome has 3 tracks of 400mm horizontal slide for knife clamping block and 3 tracks of inclined slide for object clamping stage and feeding device. The shape of the knife block and its contact with 9 tracks eliminate riding up or titing of the micro tome during the cutting.

The knife clamping block has a ball for clamping the knife holder and a handle. The knife holder is fitted with two screws serving to eliminate vibration of the knife. The clearance angle of the knife can be adjusted by means of a screw driver.

The object clamping stage has a sliding stage and object clamping holder is equipped with two rack and pinion swiveling device which can be oriented for adjustment of cutting object. It can be raised or lowered by rack and pinion for the approximate height adjustment of the object. The specimen blocks up to 30x30mm can be held in it.

The feed device can be adjusted for section thickness between 1 to 10microns by increment of 0.5micron by hand, with settling drum calibration scales. The specimen rise accurately by a micrometer screw fitted with a ratchet gear and lever transmission . The feeding screw is 40mm. In effective length and of open-and close half-nut type, it returns to the initial position when the handle is opened.

Thin and accurate paraffin section can be readily obtained. This may also be applied for preparing cello din specimens

OVERHEAD PROJECTOR



Specification:-

- Working Stage of 250mm x 250mm
- Folding arm for head for easy storage .Anti glare Fresnel lens
- External quick lamp changer
- Twin halogen lamps,24VV,250VV
- Lens 1-element $f=275$
- Light output of 2500+Lumens
- Retractable Transparency locating pins. Titling angle 0-60
- Head rotation 360
- Condenser Lens
- Safety cut switch
- Forced air cooling system(Twin fan)
- Power cord of 3 mtrs. standard detachable
- Tridoal Transformer
- Packing size 490x460x320mm

Standand Accessories :

- Two nos. glass fuse
- One No. cleaning cloth
- Dust cover packed with thermocole in sturdy cardboard box.

Manufacturers & Exporters

THE INDO SATI INSTRUMENTS & CHEMICALS

MEDICAL LAB D,B&M PHARMACY COLLEGES/INSTITUTIONS

D & B D-U-N-S NUMBER -91-652-0568 Govt Reg. No.-NSIC/GP/NTP/2022/98624

#3674, TIMBER MARKET, Ambala Cantt - 133 001 (INDIA) Tel No.: 0091-171-4000131 / 4001131

E & OE

PARAFFIN EMBEDDING BATH



Specification:

Thermostatically controlled double walled with cups and sleeves for glass tubes. Temperature up to 95°C with accuracy of 1°C.

It is a double walled unit inner chamber made up of S.S sheet and outside of M.S duly power coated. The gap between the walls is fitted with special grade glasswool in order to avoid thermal losses. Concentric rings can be removed to accommodate containers of various sizes. Controlled by hydraulic capillary type. Workable on 220V AC 50 Hz Single Phase.

Available in following capacity:

4 Cups and 6 sleeves

6 Cups and 8 sleeves

ROTARY MICROTOME



Specification:

Rotary Microtome is a highly versatile sectioning device suitable for medical institutions, research & pathological Laboratories. This microtome has special application for cutting these sections of histopathological specimens. It is ideal for those who want to avail advantages of a rotary microtome at a moderate cost. The entire mechanism stands on a heavy cast iron base ensuring stability and rigidity, its compound slide ways of critical tolerance guide the specimen block. The metal hinged cover housing protects the internal mechanism against dust and paraffin waste, it can be conveniently opened for resetting, cleaning and lubricating. The microtome is driven by a handle which can also be locked. Cutting sections are obtained in different thickness by mechanically operated crank through a knurled in front of the instrument. The knurled knob is graduated in microns for feed setting and ready reference detent click action ensures positive adjustment in one micron increment. The knife holder unit is equipped with a rotating knife clamp to adjust desired angles for best sectioning. It has forward and backward movement to ensure contact of specimen with the knife and lateral movement to get maximum use to knife edge. Smooth & accurate specimen movement is achieved with the time proven operating principles of the feed mechanism. Travel is entirely independent to the vertical movement of the specimen block. When the feed limit reaches to an end point, it disengages itself. To bring the feed screw back, the vice is pressed slightly and the main gear wheel is turned clockwise till the screw reaches its starting position. All parts are fabricated from selected alloys and the microtome knife is manufactured from fine grain steel tested to maintain optimum sharpness strength.

- Feed Adjustment 1-25 Microns
- Minimum Thickness One microns
- Total Feed excursion 28mm
- Object Holder(3Nos.) 1 Set
- Knife 120mm in a box 1 Nos.
- Honing Stone 1 Nos.
- Lubricating Oil 1 Bottle
- Dust Cover 1 Nos.

Manufacturers & Exporters

THE INDO SATI INSTRUMENTS & CHEMICALS

MEDICAL LAB D,B&M PHARMACY COLLEGES/INSTITUTIONS

D & B D-U-N-S NUMBER -91-652-0568 Govt Reg. No.-NSIC/GP/NTP/2022/98624

#3674, TIMBER MARKET, Ambala Cantt - 133 001 (INDIA) Tel No.: 0091-171-4000131 / 4001131

SLIDE WARMING TABLE



Product Details:

Material	Stainless Steel
Dimensions	300 x 250mm
Temperature	upto 80 degree celsius
Shape	Rectangular
Operating Voltage	230V AC
Materail	Made of Stainless Steel.
Temperature	80°C. With Thermostatic Controller To works on 220-230V AC,

Plate Sizes (in cm)

- 30 x 25
- 40 x 25
- 45 x 30
- 60 x 15

STAGE MICROMETER

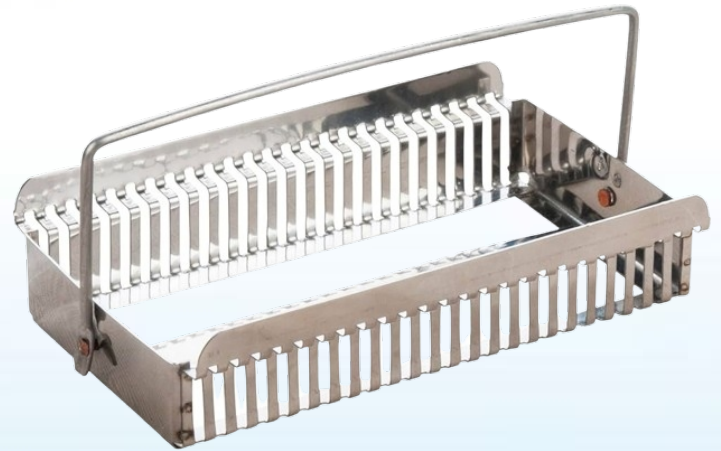


Stage Micrometer Accurately measures specimen under the microscope with scales attached in a glass microscope slide. The 1mm scale is divided to 100 accurate parts and comes in a standard 1” x 3 “ slide protected by cover slip.

Microscopes can be used not only to look at small things but also to measure them. Items seen in microscopes are very small, even a few millimeters are too big. As a result, micrometers are used. The micrometer is divided into ocular micrometer and stage micrometer, and two kinds of micrometer are used together.

Size	1x3 in
Usage/Application	Microscope Scale
Material	Glass
Brand	ERMA
Type	High quality Glass
Range	1mm
Accuracy	0.01 mm
Features	Perfect engraving

STAINING RACK



Listed in category of topmost organizations, we are offering Staining Rack to our clients. There is an excellent range of this rack available with us. It is perfect for storing different material. This rack has large surface area and is free from all types of defects. This rack has visually appealing appearance and is offered in customized and non customized options to our clients. Likewise, we are offering this at nominal price.

Features:

- Long service life
- No flaws
- Versatile

STOOL METAL



Technical Specifications

These revolving stools are with four legged steel tubular frame work. Stainless steel revolving top. Our bedside revolving stools are with screw based height adjustment from 450 mm to 680 mm. These revolving stools are ring fitted with legs for foot rest. Legs fitted with rubber shoes. Pre treated and epoxy powder coated

Product Specification:-

- The Four Legs M.S. Tubular Construction
- This Product Features 4 Section MS Foot Rest Ring
- It has SS Revolving Top Adjustable Height With MS Screw Mechanism
- The Pre - Treated Epoxy Powder Coated Finish

- | | |
|---------------------|--|
| • Usage/Application | Hospitals, Clinics, Home, Medical Colleges |
| • Frame Material | Mild Steel SS Top |
| • Type of Product | Stool |
| • Size/Dimension | 35 x 35 x 45 - 80 cm |
| • Finish | Pre - Treated Epoxy Powder Coated |

STORAGE TANK FOR CADAVER MADE OF S.S



Product Details:-

Material	Stainless Steel
Mounted with	125mm swivel Castors,2 with breaks
Size	195(L)x60(W)x72(H)cm.

We are the leading and prominent manufacturer and supplier of cadaver tank.

Product Details:

Strong stainless steel frame work construction. All structure polished finishing.

Tray Constructed with heavy duty stainless steel material for heavy drainage of the chemical.

Provision of upside open cover.

Tank made from thick stainless steel, with a high boarder.

Provision of both side manual lifting handles.

Provision of lock tray at the bottom.

TABLE WITH MARBLES OR STAINLESS STEEL HALF STANDARD SIZE 3"X2"X3"



Product Details:

Material	SS,Mild steel
Brand	Indosati

- Strong Stainless Steel tubular Frame Work.
- Top is covered with SS Sheet, with Centre Slope In cross Form.
- Provision of Drainage Hole connected with Waste water outlet Pipe.
- Provision of SS Bucket.
- Mounted on Rubber Stumps. Size: 36"L x 24"W x 36" H.

WATER STILL WALL MOUNTED S.S



The unit is recommended for making progeny free distilled water of a very high degree of purity. Made out of stainless steel, special kettle element is fitted with ejection device/auto cut for safety of the element in case water supply is stopped. The cock fitted to the unit is of brass C.P. Distillation with or without FLANGE SYSTEM can be supplied. Unit with flange system can be opened for cleaning of condenser from time to time so as to ensure its long life. A wall mounting clamp is provided with the unit but rubber tubing. Supplied with cord and plug to work on 220/230volts A.C. supply Available in capacities of approx. 4&6liters

Brand	Indosati
Material	Stainless Steel
Capacity	4,6 Liters
No of element	1 or 2

X-RAY VIEW BOX



Specification:

X Ray View Box

Enlisted as one of the leading manufacturers and traders of the industry, we are highly indulged in providing a top notch quality array of X Ray Film Viewers to the domestic market.

Easy to use, these offered products are highly attributed by our clients for their accurate and precise results. Cherished for their international quality principles and standards, these boxes are highly demanded. Moreover, we are providing these products at affordable prices.

Features:

- High Luminance for clear viewing
- Virtually no maintenance required
- Auto Light Source (Optional)
- Negligible Power Consumption
- 100% Convenient, Portable Easy to use

Specifications:

- Body: Powder Coated MS Cabinet with Aluminium Frame
- Display: 2 mm Acrylic Sheet Light: 264 LED Bulbs For Homogeneous Luminance Holding:
- Plastic Clips for X-ray Holding Input Supply: 230V 50Hz Power Supply Adapter: 12 V, 2 Amp DC Adaptor (Included) Sensor: Auto Light Source Sensor (Optional)

Available in:-

- Single
- 2 in One
- 4 In One